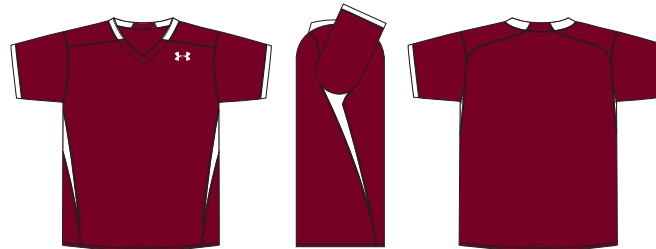




MEN'S STOCK CLASSIC LACROSSE JERSEY

SM-2XL // 100% STRETCH NYLON KNIT

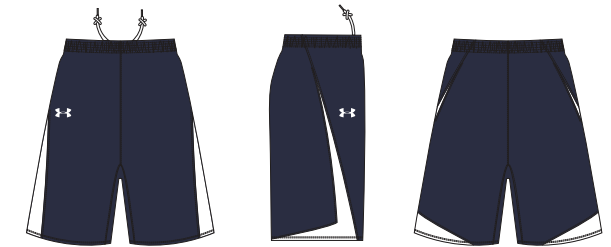
- Waist length all stretch pin dot mesh jersey
- Solid colour body with two piece contrast side panels
- Entire jersey top stitched for additional strength
- Regular fit allowing free movement
- 3 number styles available
- Cut & sew construction with heatseal logos available



MEN'S STOCK COOKER LACROSSE JERSEY

SM-2XL // 100% STRETCH NYLON KNIT

- Waist length all stretch pin dot mesh jersey
- Solid colour body with two piece contrast side inserts
- Entire jersey top stitched for additional strength
- Regular fit allowing free movement
- 3 number styles available
- Cut & sew construction with heatseal logos available



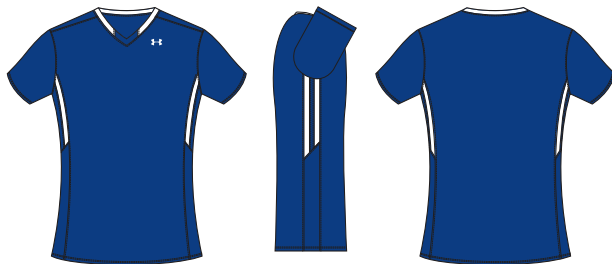
MEN'S STOCK COOKER LACROSSE SHORT

SM-2XL // 100% STRETCH NYLON KNIT

- 100% stretch nylon warp knit pin dot mesh
- Solid colour short with contrast side panels
- Cover stitching over seams for added strength
- Self material performance leg gussets
- Moisture transport system for added comfort
- Heatseal logos available



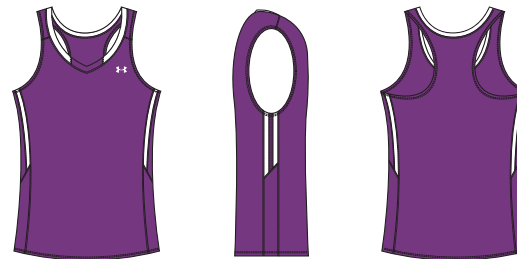
LACROSSE RANGE



WOMEN'S STOCK TEMPO LACROSSE JERSEY

XS-XL // 100% POLYESTER HIGH ENERGY MOCK MESH

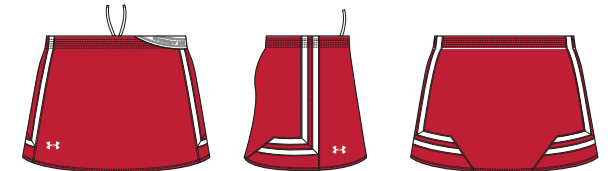
- Set-in short sleeve two colour jersey in mock mesh
- Solid colour body with contrast side inserts
- Self material 2 colour V neck split between front and back
- Entire jersey top stitched for additional strength
- 3 number styles available
- Cut & sew construction with heatseal logos available



WOMEN'S TEMPO RACERBACK LACROSSE JERSEY

XS-XL // 100% POLYESTER HIGH ENERGY MOCK MESH

- Racerback two colour jersey in mock mesh
- Solid colour body with contrast side inserts
- Self material 2 colour V neck split between front and back
- Entire jersey top stitched for additional strength
- 3 number styles available
- Cut & sew construction with heatseal logos available



WOMEN'S STOCK TEMPO LACROSSE KILT

XS-XL // 100% POLYESTER HIGH ENERGY MOCK MESH

- Two colour kilt in mock mesh
- Solid colour body with contrast side inserts
- Solid single ply body kilt with contrast side inserts
- High end UA branded exposed elastic waistband
- Entire kilt top stitched for additional strength
- Cut & sew construction with heatseal logos available



UNDER ARMOUR NUMBERS, LETTERS & LOGO DETAILS

NUMBERS & LETTERS

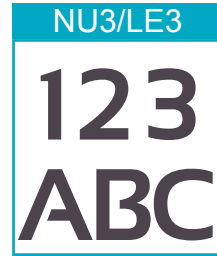
Choose from three styles of number/letter to compliment your on field garments. Whether you're looking for a college style number, a clean, modern typeface, or something more classic, our three styles fit perfectly with our teamwear ranges.



Solid
(1 Colour)



Solid
(1 Colour)



Solid
(1 Colour)



Two Tone
(2 Colour)



Two Tone
(2 Colour)



Two Tone
(2 Colour)

20cm numbers are recommended for the back of both performance and regular fit jerseys, shirts and tops, 5cm numbers for shorts, trackpants, or chest and sleeve positions.

Names can be added across the back shoulders, or as initials on the sleeve/chest. These are available in 5cm and 7cm high lettering. If necessary, we reserve the right to adjust the size/layout of logos, numbers and lettering to fit the garment in the most attractive way possible.

Numbers and names can be sublimated into any of our on-field sublimated garments. There is no additional cost to the garment, and colours can be specified from our 12 core colours, or Pantone (PMS) colours of your choice.

NETBALL PATCHES

Complete your netball kit with a set of UA netball patches. Our patches are fully sublimated to compliment the colour of your dresses or tops. For sublimation, we use the Pantone colour library, allowing us to use almost any colour in your teamwear designs.

PATCH SPECIFICATION

Dimensions: 185mm (w) x 220mm (h)

Colour: Sublimated (all colours available)

Quantity: A full set contains 14 patches (7 positions)

Velcro: 2cm velcro to attach to dresses/tops

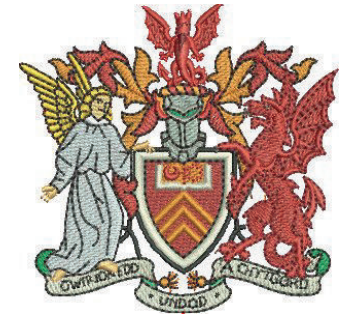


EMBROIDERY

A full embroidery service is available for your crest or logo.

If the logo is already set up, the electronic version (the embroidery disc or DST file) will need to be submitted with the order, as well as details of the colours required. Madeira thread shades must be provided, otherwise standard Under Armour colours will be used.

If the logo is not set up electronically, we will require a high resolution logo in order to set up the disc for you. Please explain how you want your logo to appear on both dark and light backgrounds, as well as giving adequate sizing information. You will receive a copy to approve before production.



HEATSEAL & THERMO PRINT

Screen printing and thermo printing are available on selected items. For best results, we require a high resolution logo to be sent to us electronically.

Suitable formats include:

Ai - Adobe Illustrator file

EPS - Vector format

PDF/JPEG - High resolution (300dpi+)

For logos containing text, please provide us with the font name if possible. Pantone (PMS) colours must also be submitted. If no pantone colours are specified, standard Under Armour colours will be used.

Crests and logos can be sublimated into any of our sublimated garments at no additional cost. We still require high quality logos for sublimation, so please use the above points as a guide.

Some fabrics are better suited to some applications methods than others. If you are unsure about choosing the best logo application method, please contact your Under Armour sales representative for more information.

IMPORTANT NOTE: Please ensure you have all necessary permissions before using any logos or imagery. Under Armour Team-sports can not accept any responsibility for the unauthorised use of third party logos or images. Under Armour Team-sports reserve the right to refuse to apply any name or logo considered offensive or unsuitable.

