



TEAMSPO RTS 2016



BRAND TO MAKE ALL ATHLETES BETTER
MISSION *THROUGH PASSION, DESIGN AND THE RELENTLESS PURSUIT OF INNOVATION.*

VISION TO EMPOWER
ATHLETES EVERYWHERE.

I WILL.TM



+ CONTENTS

02 MEN'S RUGBY

08 WOMEN'S NETBALL

13 FOOTBALL

19 HOCKEY

26 BASKETBALL

30 ATHLETICS

34 CRICKET

38 OTHER SPORTS

41 MEN'S BESPOKE TRAINING

49 WOMEN'S BESPOKE TRAINING

57 STOCK RANGE

66 UA BASELAYER

71 NUMBERS, LOGO'S & LETTERS

72 CONTACT DETAILS & NOTES

RUGBY +



I WILL™

RUGBY SIZING

M MEN'S SIZING

DOMINATE PERFORMANCE FIT

Contoured to the body for a tight fit, incorporating 4 way stretch

	XS	SM	MD	LG	XL	2XL	3XL	4XL	5XL
½ Chest	37 cm	41 cm	45 cm	49 cm	53 cm	56 cm	59 cm	62 cm	65 cm
Waist	30 in	32 in	34 in	36 in	38 in	40 in	42 in	44 in	46 in



EVO SLIM FIT

Close fit with limited stretch - designed to fit closely without reducing mobility

	XS	SM	MD	LG	XL	2XL	3XL	4XL	5XL
½ Chest	40.5 cm	44.5 cm	48.5 cm	52.5 cm	56.5 cm	60.5 cm	64.5 cm	68.5 cm	72.5 cm
Waist	30 in	32 in	34 in	36 in	38 in	40 in	42 in	44 in	46 in



DRIVE SEMI FIT

An athletic cut designed for mobility without any extra bulk or fabric

	XS	SM	MD	LG	XL	2XL	3XL	4XL	5XL
½ Chest	40.5 cm	44.5 cm	48.5 cm	52.5 cm	56.5 cm	60.5 cm	64.5 cm	68.5 cm	72.5 cm
Waist	30 in	32 in	34 in	36 in	38 in	40 in	42 in	44 in	46 in



DISRUPT REGULAR FIT

Looser fitting - provides excellent range of motion and free movement

	XS	SM	MD	LG	XL	2XL	3XL	4XL	5XL
½ Chest	45.5 cm	49.5 cm	53.5 cm	57.5 cm	61.5 cm	64.5 cm	67.5 cm	70.5 cm	73.5 cm
Waist	30 in	32 in	34 in	36 in	38 in	40 in	42 in	44 in	46 in



Y YOUTH SIZING

DISRUPT REGULAR FIT

Looser fitting - provides excellent range of motion and free movement

	CHILD	JUNIOR	YXS	YSM	YMD	YLG	YXL
½ Chest	35 cm	37.5 cm	40 cm	42.5 cm	45 cm	47.5 cm	50 cm
Waist	16 in	18 in	20 in	22 in	24 in	26 in	28 in



STYLE INFORMATION

COLLAR STYLES

All six collar styles are available on all jersey fit options, both men's & youth.

SHORT SLEEVES

Dominate, Drive, Disrupt and Evo fits are all available with short sleeves as standard.

LONG SLEEVES

Only Disrupt regular fit jerseys are available with a long sleeve option.

REVERSIBLE SHIRTS

Disrupt regular fit jerseys are now also available as a reversible style, consisting of any two rugby designs in our range*.

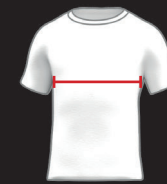
NUMBER STYLES

We offer a range of number and letter styles to compliment your jersey, all of which can be coloured to match your kit.

*Please limit the use of white in your design as this will result in shadowing from the reverse print.

HOW TO MEASURE

Half chest measured 2cm down from the under arm seam when garment is laid flat



COLLARS



CREW COLLAR



V COLLAR



TRADITIONAL COLLAR



LOOP BACK COLLAR



HYBRID COLLAR



ELITE COLLAR

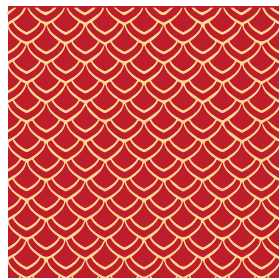
SUBLIMATION



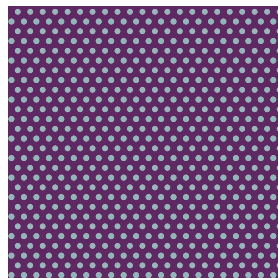
The majority of our rugby shirts use sublimation to apply the colour to the fabric. This process allows us to use almost any colour in the Pantone colour library for your kit design. Sublimation also means that sponsor logos and playing numbers are printed into the garment, so there are no additional decoration costs. This applies across all our sports - look out for the Sublimation logo beneath each product.

Gradients and prints can also be applied to further enhance your Under Armour kit. See our range of prints below for more ideas. Prints can be applied to all sublimated playing kit across all sports.

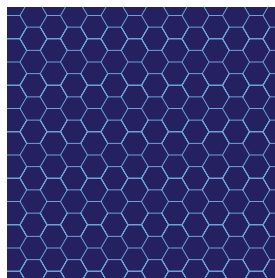
PRINTS



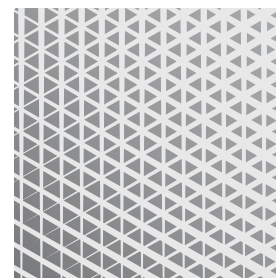
SCALES



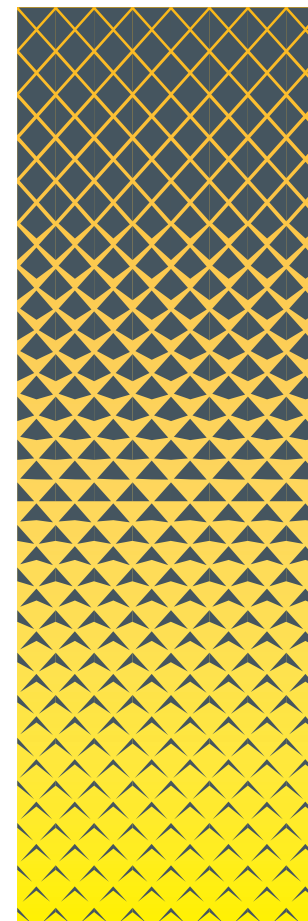
MESH



HONEYCOMB



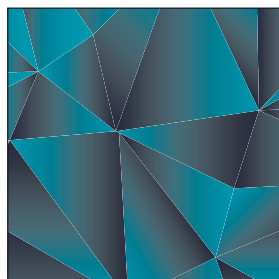
CROSSWIRE



FADE



EXPLOSION



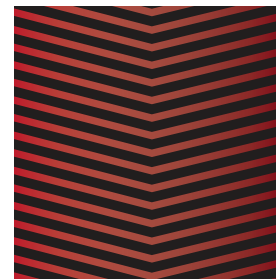
SHATTER



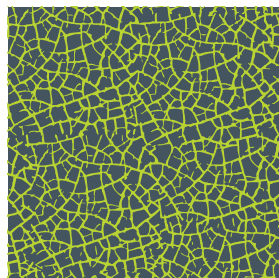
CHECKERS



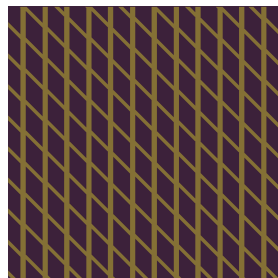
CAMO



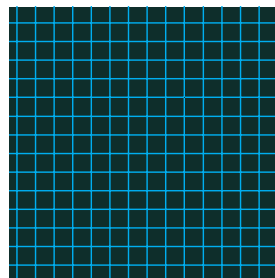
CHEVRON



CRACKS



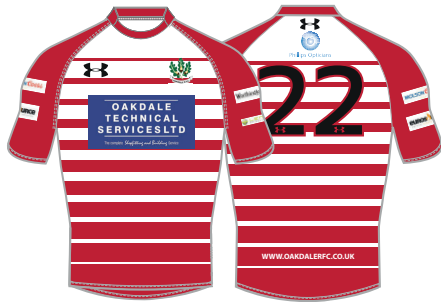
WIRE



GRID



HEXACHROME



RUGBY JERSEY R015

XS-6XL // YXS-YXL

- Fully sublimated design
- Wicking & quick drying to keep you cool & comfortable
- Long and short sleeve option, 4 available collar styles*
- Choose from 4 distinctive fit options
- 3 number styles available
- Sublimated logo to right chest and back neck

Sublimated **M** **Y**



RUGBY JERSEY R025

XS-6XL // YXS-YXL

- Fully sublimated design
- Wicking & quick drying to keep you cool & comfortable
- Long and short sleeve option, 4 available collar styles*
- Choose from 4 distinctive fit options
- 3 number styles available
- Sublimated logo to right chest and back neck

Sublimated **M** **Y**



RUGBY JERSEY R031

XS-6XL // YXS-YXL

- Fully sublimated design
- Wicking & quick drying to keep you cool & comfortable
- Long and short sleeve option, 4 available collar styles*
- Choose from 4 distinctive fit options
- 3 number styles available
- Sublimated logo to right chest and back neck

Sublimated **M** **Y**



RUGBY JERSEY R032

XS-6XL // YXS-YXL

- Fully sublimated design
- Wicking & quick drying to keep you cool & comfortable
- Long and short sleeve option, 4 available collar styles*
- Choose from 4 distinctive fit options
- 3 number styles available
- Sublimated logo to right chest and back neck

Sublimated **M** **Y**



RUGBY JERSEY R033

XS-6XL // YXS-YXL

- Fully sublimated design
- Wicking & quick drying to keep you cool & comfortable
- Long and short sleeve option, 4 available collar styles*
- Choose from 4 distinctive fit options
- 3 number styles available
- Sublimated logo to right chest and back neck

Sublimated **M** **Y**



RUGBY JERSEY R034

XS-6XL // YXS-YXL

- Fully sublimated design
- Wicking & quick drying to keep you cool & comfortable
- Long and short sleeve option, 4 available collar styles*
- Choose from 4 distinctive fit options
- 3 number styles available
- Sublimated logo to right chest and back neck

Sublimated **M** **Y**



RUGBY JERSEY R026

XS-6XL // YXS-YXL

- Fully sublimated design
- Wicking & quick drying to keep you cool & comfortable
- Long and short sleeve option, 4 available collar styles*
- Choose from 4 distinctive fit options
- 3 number styles available
- Sublimated logo to front centre neck and back neck

Sublimated **M** **Y**



RUGBY JERSEY R024

XS-6XL // YXS-YXL

- Fully sublimated design
- Wicking & quick drying to keep you cool & comfortable
- Long and short sleeve option, 4 available collar styles*
- Choose from 4 distinctive fit options
- 3 number styles available
- Sublimated logo to front centre neck and back neck

Sublimated **M** **Y**

*Long sleeve option available on Disrupt regular fit jersey only - Youth sizes available in Disrupt regular fit only.

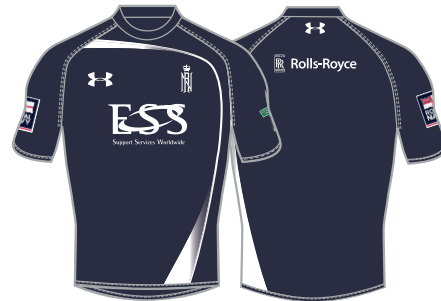


RUGBY JERSEY R001

XS-6XL // YXS-YXL

- Fully sublimated design
- Wicking & quick drying to keep you cool & comfortable
- Long and short sleeve option, 4 available collar styles*
- Choose from 4 distinctive fit options
- 3 number styles available
- Sublimated logo to right chest and back neck

Sublimated M Y



RUGBY JERSEY R004

XS-6XL // YXS-YXL

- Fully sublimated design
- Wicking & quick drying to keep you cool & comfortable
- Long and short sleeve option, 4 available collar styles*
- Choose from 4 distinctive fit options
- 3 number styles available
- Sublimated logo to right chest and back neck

Sublimated M Y



RUGBY JERSEY R006

XS-6XL // YXS-YXL

- Fully sublimated design
- Wicking & quick drying to keep you cool & comfortable
- Long and short sleeve option, 4 available collar styles*
- Choose from 4 distinctive fit options
- 3 number styles available
- Sublimated logo to right chest and back neck

Sublimated M Y



RUGBY JERSEY R035

XS-6XL // YXS-YXL

- Fully sublimated design
- Wicking & quick drying to keep you cool & comfortable
- Long and short sleeve option, 4 available collar styles*
- Choose from 4 distinctive fit options
- 3 number styles available
- Sublimated logo to right chest and back neck

Sublimated M Y

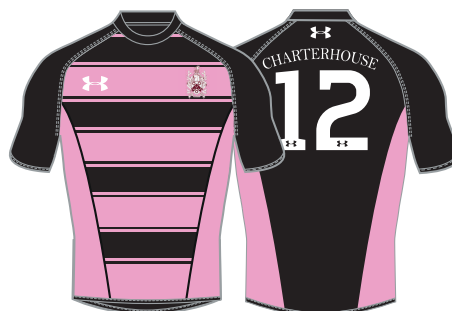


RUGBY JERSEY R007

XS-6XL // YXS-YXL

- Fully sublimated design
- Wicking & quick drying to keep you cool & comfortable
- Long and short sleeve option, 4 available collar styles*
- Choose from 4 distinctive fit options
- 3 number styles available
- Sublimated logo to right chest and back neck

Sublimated M Y



RUGBY JERSEY R010

XS-6XL // YXS-YXL

- Fully sublimated design
- Wicking & quick drying to keep you cool & comfortable
- Long and short sleeve option, 4 available collar styles*
- Choose from 4 distinctive fit options
- 3 number styles available
- Sublimated logo to right chest and back neck

Sublimated M Y



RUGBY JERSEY R036

XS-6XL // YXS-YXL

- Fully sublimated design
- Wicking & quick drying to keep you cool & comfortable
- Long and short sleeve option, 4 available collar styles*
- Choose from 4 distinctive fit options
- 3 number styles available
- Sublimated logo to right chest and back neck

Sublimated M Y



RUGBY JERSEY R027

XS-6XL // YXS-YXL

- Fully sublimated design
- Wicking & quick drying to keep you cool & comfortable
- Long and short sleeve option, 4 available collar styles*
- Choose from 4 distinctive fit options
- 3 number styles available
- Sublimated logo to right chest and back neck

Sublimated M Y

*Long sleeve option available on Disrupt regular fit jersey only - Youth sizes available in Disrupt regular fit only.



Cut & Sew

LEGEND RUGBY SHORT RS015

XS-6XL // YXS-YXL // 82% NYLON, 18% SPANDEX

- Cut and sew design with contrast piping to leg & rear
- Superior moisture transport system & enhanced dry times
- Flat seaming for comfort and mobility
- Silicone gripper to waist to prevent shorts riding
- Adjustable inner drawcord to waist
- Embroidered logo to lower right leg

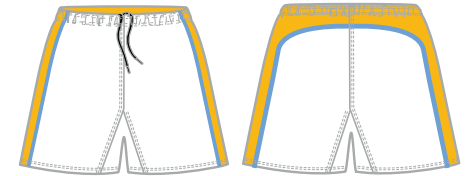


Cut & Sew

LEGEND RUGBY SHORT RS116

XS-6XL // YXS-YXL // 82% NYLON, 18% SPANDEX

- Cut and sew design with contrast panels to leg
- Superior moisture transport system & enhanced dry times
- Flat seaming for comfort and mobility
- Silicone gripper to waist to prevent shorts riding
- Adjustable inner drawcord to waist
- Embroidered logo to lower right leg



Cut & Sew

LEGEND RUGBY SHORT RS017

XS-6XL // YXS-YXL // 82% NYLON, 18% SPANDEX

- Cut and sew design with contrast piping to side panels
- Superior moisture transport system & enhanced dry times
- Flat seaming for comfort and mobility
- Silicone gripper to waist to prevent shorts riding
- Adjustable inner drawcord to waist
- Embroidered logo to lower right leg



PREMIER RUGBY SHORT RS118

XS-6XL // YXS-YXL // 82% NYLON, 18% SPANDEX

- Fully sublimated design
- Superior moisture transport system & enhanced dry times
- Flat seaming for comfort and mobility
- Silicone gripper to waist to prevent shorts riding
- Adjustable inner drawcord to waist
- Sublimated logo to lower right leg

Sublimated



Cut & Sew

ACADEMY RUGBY SHORT RS119

XS-6XL // YXS-YXL // 82% NYLON, 18% SPANDEX

- Cut and sew design
- Superior moisture transport system & enhanced dry times
- Flat seaming for comfort and mobility
- Silicone gripper to waist to prevent shorts riding
- Adjustable inner drawcord to waist
- Embroidered logo to lower right leg



In Stock

STOCK RUGBY SHORT SRS020

XS-3XL // YXS-YXL // 82% NYLON, 18% SPANDEX

- Cut and sew design
- Superior moisture transport system & enhanced dry times
- Flat seaming for comfort and mobility
- Silicone gripper to waist to prevent shorts riding
- Adjustable inner drawcord to waist
- Embroidered logo to lower right leg





NETBALL +



I WILL!

NETBALL SIZING

W WOMEN'S SIZING

Size	8	10	12	14	16	18	20
Chest	32 in	34 in	36 in	38 in	40 in	42 in	44 in
Waist	25 in	27 in	29 in	31 in	33 in	35 in	37 in

Y YOUTH SIZING

	CHILD	JUNIOR	YXS	YSM	YMD	YLG	YXL
Chest	23 in	25 in	27 in	29 in	31 in	33 in	35-36 in
Waist	16 in	18 in	20 in	22 in	24 in	26 in	28 in

STYLE INFORMATION

REBOUND SUBLIMATED STYLES

Incorporates all our fully sublimated netball tops and dresses. Full sublimation allows us to print any colour from the Pantone colour library, so we can get the perfect match for your team colours. All colours, design elements and logos are sublimated into the fabric, and all included within the cost of the garment.

DYNAMO CUT & SEW STYLES

Our Dynamo netball range feature a cut & sew design using solid dyed fabric as opposed to the printing process involved in sublimation. We offer a range of popular team colours, as well as several different design options from sleeve to back styles. Please note that the colour range available for cut & sew is much more limited than sublimation.

NETBALL PATCHES

Complete your netball kit with a set of UA netball patches. Our patches are fully sublimated to compliment the colour of your dresses or tops. For sublimation, we use the Pantone colour library, allowing us to use almost any colour in your teamwear designs. One set of patches includes seven positions, with two patches for each. All include velcro as standard.

Dimensions: 185mm (w) x 220mm (h)

Colour: Sublimated (all colours available)

Quantity: A full set contains 14 patches (7 positions)

Velcro: 1cm velcro on both patches and dresses

SLEEVE/BACK STYLES



SL SLEEVELESS



SS SHORT SLEEVE*



SB SLEEVELESS BACK



RB RACERBACK

*Not available on netball dresses

SUBLIMATION



The majority of our netball products use sublimation to apply the colour to the fabric. This process allows us to use almost any colour in the Pantone colour library for your kit design. Sublimation also means that sponsor logos and numbers/initials are printed into the garment, so there are no additional decoration costs. This applies across all our sports - look out for the Sublimation logo beneath each product.

Gradients and prints can also be applied to further enhance your Under Armour kit. See our range of prints below for more ideas. Prints can be applied to all sublimated playing kit across all sports.





REBOUND NETBALL TOP N001

SIZE 8-20 // YXS-YXL // 100% POLYESTER

- Fully sublimated design
- Wicking and quick drying to keep you cool & comfortable
- Streamlined fit eliminates the bulk of extra fabric
- Available in short sleeve, sleeveless and racerback
- Sublimated logo to right chest and back neck

Sublimated



REBOUND NETBALL TOP N004

SIZE 8-20 // YXS-YXL // 100% POLYESTER

- Fully sublimated design
- Wicking and quick drying to keep you cool & comfortable
- Streamlined fit eliminates the bulk of extra fabric
- Available in short sleeve, sleeveless and racerback
- Sublimated logo to right chest and back neck

Sublimated



REBOUND NETBALL TOP N005

SIZE 8-20 // YXS-YXL // 100% POLYESTER

- Fully sublimated design
- Wicking and quick drying to keep you cool & comfortable
- Streamlined fit eliminates the bulk of extra fabric
- Available in short sleeve, sleeveless and racerback
- Sublimated logo to right chest and back neck

Sublimated



REBOUND NETBALL TOP N011

SIZE 8-20 // YXS-YXL // 100% POLYESTER

- Fully sublimated design
- Wicking and quick drying to keep you cool & comfortable
- Streamlined fit eliminates the bulk of extra fabric
- Available in short sleeve, sleeveless and racerback
- Sublimated logo to right chest and back neck

Sublimated



REBOUND NETBALL TOP N007

SIZE 8-20 // YXS-YXL // 100% POLYESTER

- Fully sublimated design
- Wicking and quick drying to keep you cool & comfortable
- Streamlined fit eliminates the bulk of extra fabric
- Available in short sleeve, sleeveless and racerback
- Sublimated logo to right chest and back neck

Sublimated

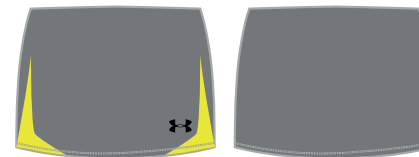


REBOUND NETBALL TOP N008

SIZE 8-20 // YXS-YXL // 100% POLYESTER

- Fully sublimated design
- Wicking and quick drying to keep you cool & comfortable
- Streamlined fit eliminates the bulk of extra fabric
- Available in short sleeve, sleeveless and racerback
- Sublimated logo to right chest and back neck

Sublimated

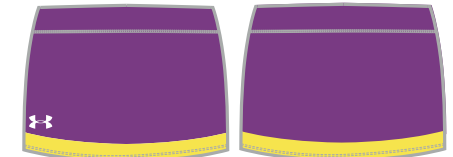


REBOUND NETBALL SKORT NSK002

SIZE 8-20 // YXS-YXL // 82% NYLON, 18% SPANDEX

- Fully sublimated design
- Wicking and quick drying to keep you cool and comfortable
- Streamlined fit eliminates the bulk of extra fabric
- Available as a skirt or a skort
- Sublimated logo to lower right front

Sublimated



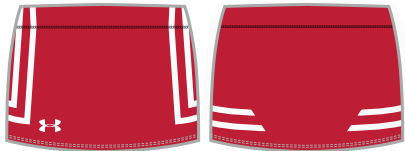
REBOUND NETBALL SKORT NSK003

SIZE 8-20 // YXS-YXL // 82% NYLON, 18% SPANDEX

- Fully sublimated design
- Wicking and quick drying to keep you cool & comfortable
- Streamlined fit eliminates the bulk of extra fabric
- Available in short sleeve, sleeveless and racerback
- Sublimated logo to right chest and back neck

Sublimated





REBOUND NETBALL SKORT NSK004

SIZE 8-20 // YXS-YXL // 82% NYLON, 18% SPANDEX

- Fully sublimated design
- Wicking and quick drying to keep you cool and comfortable
- Streamlined fit eliminates the bulk of extra fabric
- Available as a skirt or a skort
- Sublimated logo to lower right front

Sublimated



REBOUND NETBALL DRESS ND015

SIZE 8-20 // YXS-YXL // 82% NYLON, 18% SPANDEX

- Fully sublimated design
- Wicking and quick drying to keep you cool & comfortable
- Streamlined fit eliminates the bulk of extra fabric
- Available in sleeveless and racerback
- Sublimated logo to right chest and back neck

Sublimated



REBOUND NETBALL DRESS ND004

SIZE 8-20 // YXS-YXL // 82% NYLON, 18% SPANDEX

- Fully sublimated design
- Wicking and quick drying to keep you cool & comfortable
- Streamlined fit eliminates the bulk of extra fabric
- Available in sleeveless and racerback
- Sublimated logo to right chest and back neck

Sublimated



REBOUND NETBALL DRESS ND006

SIZE 8-20 // YXS-YXL // 82% NYLON, 18% SPANDEX

- Fully sublimated design
- Wicking and quick drying to keep you cool & comfortable
- Streamlined fit eliminates the bulk of extra fabric
- Available in sleeveless and racerback
- Sublimated logo to right chest and back neck

Sublimated



REBOUND NETBALL DRESS ND007

SIZE 8-20 // YXS-YXL // 82% NYLON, 18% SPANDEX

- Fully sublimated design
- Wicking and quick drying to keep you cool & comfortable
- Streamlined fit eliminates the bulk of extra fabric
- Available in sleeveless and racerback
- Sublimated logo to right chest and back neck

Sublimated



REBOUND NETBALL DRESS ND008

SIZE 8-20 // YXS-YXL // 82% NYLON, 18% SPANDEX

- Fully sublimated design
- Wicking and quick drying to keep you cool & comfortable
- Streamlined fit eliminates the bulk of extra fabric
- Available in sleeveless and racerback
- Sublimated logo to right chest and back neck

Sublimated



REBOUND NETBALL DRESS ND014

SIZE 8-20 // YXS-YXL // 82% NYLON, 18% SPANDEX

- Fully sublimated design
- Wicking and quick drying to keep you cool & comfortable
- Streamlined fit eliminates the bulk of extra fabric
- Available in sleeveless and racerback
- Sublimated logo to right chest and back neck

Sublimated



REBOUND NETBALL DRESS ND011

SIZE 8-20 // YXS-YXL // 82% NYLON, 18% SPANDEX

- Fully sublimated design
- Wicking and quick drying to keep you cool & comfortable
- Streamlined fit eliminates the bulk of extra fabric
- Available in sleeveless and racerback
- Sublimated logo to right chest and back neck

Sublimated





REBOUND NETBALL DRESS ND001

SIZE 8-20 // YXS-YXL // 82% NYLON, 18% SPANDEX

- Fully sublimated design
- Wicking and quick drying to keep you cool & comfortable
- Streamlined fit eliminates the bulk of extra fabric
- Available in both sleeveless and racerback
- Sublimated logo to right chest and back neck

Sublimated

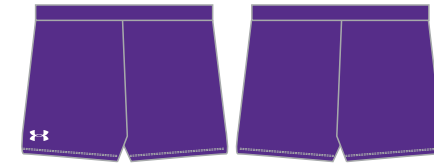


REBOUND NETBALL DRESS ND009

SIZE 8-20 // YXS-YXL // 82% NYLON, 18% SPANDEX

- Fully sublimated design
- Wicking and quick drying to keep you cool & comfortable
- Streamlined fit eliminates the bulk of extra fabric
- Available in both sleeveless and racerback
- Sublimated logo to right chest and back neck

Sublimated



WOMEN'S NETBALL LYCRA SHORT NS001

SIZE 8-20 // YXS-YXL // 91% POLYESTER, 9% SPANDEX

- New fully sublimated design
- Wicking and quick drying to keep you cool and comfortable
- Close fitting
- Sublimated logo to lower right front

Sublimated



Cut & Sew

DYNAMO NETBALL DRESS NDC01

SIZE 8-20 // YXS-YXL // 100% POLYESTER INTERLOCK

- Cut and sew design
- Wicking and quick drying to keep you cool & comfortable
- Streamlined fit eliminates the bulk of extra fabric
- Available in both sleeveless and racerback
- Embroidered logo to right chest, back neck & mid back

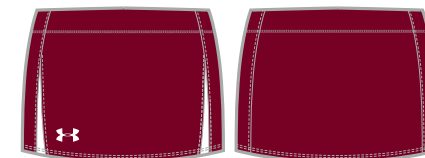


Cut & Sew

DYNAMO NETBALL TOP NC011

SIZE 8-20 // YXS-YXL // 100% POLYESTER INTERLOCK

- Cut and sew design
- Wicking and quick drying to keep you cool and comfortable
- Streamlined fit eliminates the bulk of extra fabric
- Available in both short sleeve and sleeveless styles
- Embroidered logo to right chest and back neck



Cut & Sew

DYNAMO NETBALL SKORT NCSK011

SIZE 8-20 // YXS-YXL // 100% POLYESTER INTERLOCK

- Cut and sew design
- Wicking and quick drying to keep you cool & comfortable
- Streamlined fit eliminates the bulk of extra fabric
- Available as a skirt or a skort
- Embroidered logo to lower right front



FOOTBALL +



UNDER ARMOUR

I WILL.™

FOOTBALL SIZING

M MEN'S SIZING

REGULAR FIT

Loose fitting - provides excellent range of motion and free movement

	XS	SM	MD	LG	XL	2XL	3XL	4XL	5XL
Chest	37 cm	41 cm	45 cm	49 cm	53 cm	56 cm	59 cm	62 cm	65 cm
Waist	30 in	32 in	34 in	36 in	38 in	40 in	42 in	44 in	46 in

Y YOUTH SIZING

REGULAR FIT

Loose fitting - provides excellent range of motion and free movement

	CHILD	JUNIOR	YXS	YSM	YMD	YLG	YXL
Chest	23 cm	25 cm	27 cm	29 cm	31 cm	33 cm	35-36 cm
Waist	16 in	18 in	20 in	22 in	24 in	26 in	28 in

STYLE INFORMATION

VOLLEY SUBLIMATED STYLES

Incorporates all our fully sublimated football playing shirts and goalkeeper shirts. Full sublimation allows us to print any colour from the Pantone colour library, so we can get the perfect match for your team colours. All colours, design elements and logos are sublimated into the fabric, and all included within the cost of the garment.

DYNAMO CUT & SEW STYLES

Our Dynamo football range feature a cut & sew design using solid dyed fabric as opposed to the printing process involved in sublimation. We offer a range of popular team colours, as well as several different design options from sleeve to back styles. Please note that the colour range available for cut & sew is much more limited than sublimation.

COLLARS



CREW COLLAR



V COLLAR



TRADITIONAL COLLAR



NOTCH NECK COLLAR



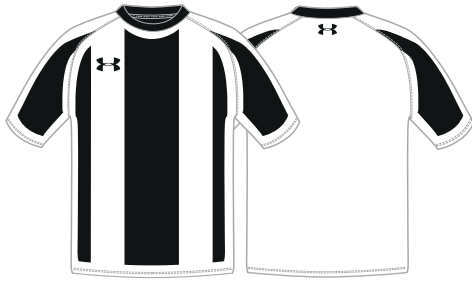
HYBRID COLLAR

SUBLIMATION



The majority of our football products use sublimation to apply the colour to the fabric. This process allows us to use almost any colour in the Pantone colour library for your kit design. Sublimation also means that sponsor logos and numbers/initials are printed into the garment, so there are no additional decoration costs. This applies across all our sports - look out for the Sublimation logo beneath each product.

Gradients and prints can also be applied to further enhance your Under Armour kit. See our range of prints below for more ideas. Prints can be applied to all sublimated playing kit across all sports.



VOLLEY FOOTBALL SHIRT F019

XS-3XL // YXS-YXL // 100% POLYESTER

- Fully sublimated design
- Wicking & quick drying to keep you cool & comfortable
- Long and short sleeve option, 4 available collar styles
- Regular fit allowing free movement
- 3 number styles available
- Sublimated logo to right chest and back neck

Sublimated



VOLLEY FOOTBALL SHIRT F020

XS-3XL // YXS-YXL // 100% POLYESTER

- Fully sublimated design
- Wicking & quick drying to keep you cool & comfortable
- Long and short sleeve option, 4 available collar styles
- Regular fit allowing free movement
- 3 number styles available
- Sublimated logo to right chest and back neck

Sublimated



VOLLEY FOOTBALL SHIRT F021

XS-3XL // YXS-YXL // 100% POLYESTER

- Fully sublimated design
- Wicking & quick drying to keep you cool & comfortable
- Long and short sleeve option, 4 available collar styles
- Regular fit allowing free movement
- 3 number styles available
- Sublimated logo to right chest and back neck

Sublimated



VOLLEY FOOTBALL SHIRT F007

XS-3XL // YXS-YXL // 100% POLYESTER

- Fully sublimated design
- Wicking & quick drying to keep you cool & comfortable
- Long and short sleeve option, 4 available collar styles
- Regular fit allowing free movement
- 3 number styles available
- Sublimated logo to right chest and back neck

Sublimated



VOLLEY FOOTBALL SHIRT F008

XS-3XL // YXS-YXL // 100% POLYESTER

- Fully sublimated design
- Wicking & quick drying to keep you cool & comfortable
- Long and short sleeve option, 4 available collar styles
- Regular fit allowing free movement
- 3 number styles available
- Sublimated logo to right chest and back neck

Sublimated



VOLLEY FOOTBALL SHIRT F009

XS-3XL // YXS-YXL // 100% POLYESTER

- Fully sublimated design
- Wicking & quick drying to keep you cool & comfortable
- Long and short sleeve option, 4 available collar styles
- Regular fit allowing free movement
- 3 number styles available
- Sublimated logo to right chest and back neck

Sublimated



VOLLEY FOOTBALL SHIRT F010

XS-3XL // YXS-YXL // 100% POLYESTER

- Fully sublimated design
- Wicking & quick drying to keep you cool & comfortable
- Long and short sleeve option, 4 available collar styles
- Regular fit allowing free movement
- 3 number styles available
- Sublimated logo to right chest and back neck

Sublimated



VOLLEY FOOTBALL SHIRT F003

XS-3XL // YXS-YXL // 100% POLYESTER

- Fully sublimated design
- Wicking & quick drying to keep you cool & comfortable
- Long and short sleeve option, 4 available collar styles
- Regular fit allowing free movement
- 3 number styles available
- Sublimated logo to right chest and back neck

Sublimated





VOLLEY FOOTBALL SHIRT F011

XS-3XL // YXS-YXL // 100% POLYESTER

- Fully sublimated design
- Wicking & quick drying to keep you cool & comfortable
- Long and short sleeve option, 4 available collar styles
- Regular fit allowing free movement
- 3 number styles available
- Sublimated logo to right chest and back neck

Sublimated

M Y



VOLLEY FOOTBALL SHIRT F012

XS-3XL // YXS-YXL // 100% POLYESTER

- Fully sublimated design
- Wicking & quick drying to keep you cool & comfortable
- Long and short sleeve option, 4 available collar styles
- Regular fit allowing free movement
- 3 number styles available
- Sublimated logo to right chest and back neck

Sublimated

M Y



VOLLEY FOOTBALL SHIRT F022

XS-3XL // YXS-YXL // 100% POLYESTER

- Fully sublimated design
- Wicking & quick drying to keep you cool & comfortable
- Long and short sleeve option, 4 available collar styles
- Regular fit allowing free movement
- 3 number styles available
- Sublimated logo to right chest and back neck

Sublimated

M Y



VOLLEY FOOTBALL SHIRT F023

XS-3XL // YXS-YXL // 100% POLYESTER

- Fully sublimated design
- Wicking & quick drying to keep you cool and comfortable
- Long and short sleeve option, 3 available collar styles
- Regular fit allowing free movement
- 3 number styles available
- Sublimated logo to right chest and back neck

Sublimated

M Y



VOLLEY FOOTBALL SHIRT F024

XS-3XL // YXS-YXL // 100% POLYESTER

- Fully sublimated design
- Wicking & quick drying to keep you cool & comfortable
- Long and short sleeve option, 4 available collar styles
- Regular fit allowing free movement
- 3 number styles available
- Sublimated logo to centre chest and back neck

Sublimated

M Y



VOLLEY FOOTBALL SHIRT F018

XS-3XL // YXS-YXL // 100% POLYESTER

- Fully sublimated design
- Wicking & quick drying to keep you cool & comfortable
- Long and short sleeve option, 4 available collar styles
- Regular fit allowing free movement
- 3 number styles available
- Sublimated logo to centre chest and back neck

Sublimated

M Y



FOOTBALL GOALKEEPER SHIRT FGK002

XS-3XL // YXS-YXL // 100% POLYESTER

- Fully sublimated design
- Wicking & quick drying to keep you cool & comfortable
- Long and short sleeve option, 4 available collar styles
- Regular fit allowing free movement
- 3 number styles available
- Sublimated logo to right chest, back neck & upper sleeve

Sublimated

M Y



FOOTBALL GOALKEEPER SHIRT FGK004

XS-3XL // YXS-YXL // 100% POLYESTER

- Fully sublimated design
- Wicking & quick drying to keep you cool & comfortable
- Long and short sleeve option, 4 available collar styles
- Regular fit allowing free movement
- 3 number styles available
- Sublimated logo to right chest and back neck

Sublimated

M Y



Cut & Sew

ESCAPE FOOTBALL SHORT FS011

XS-3XL // YXS-YXL // 100% POLYESTER PIQUE

- Cut and sew design
- Wicking and anti-bacterial to keep you dry and fresh
- Adjustable drawcord to inner waist
- Regular fit allowing free movement
- Available in a range of popular colours
- Embroidered logo to lower right leg



Cut & Sew

GOALKEEPER SHORT FS003

XS-3XL // YXS-YXL // 100% POLYESTER PIQUE

- Cut and sew design
- Wicking and anti-bacterial to keep you dry and fresh
- Adjustable drawcord to inner waist
- Regular fit allowing free movement
- Available in a range of popular colours
- Embroidered logo to lower right leg



PREMIER FOOTBALL SHORT FS002

XS-3XL // YXS-YXL // 100% POLYESTER TWILL

- Fully sublimated design
- Wicking and anti-bacterial to keep you dry and fresh
- Adjustable drawcord to inner waist
- Regular fit allowing free movement
- Contrast panels to side
- Sublimated logo to lower right leg



PREMIER FOOTBALL SHORT FS022

XS-3XL // YXS-YXL // 100% POLYESTER TWILL

- Fully sublimated design
- Wicking and anti-bacterial to keep you dry and fresh
- Adjustable drawcord to inner waist
- Regular fit allowing free movement
- Contrast panels to side
- Sublimated logo to lower right leg





Cut & Sew

DYNAMO FOOTBALL SHIRT FC001

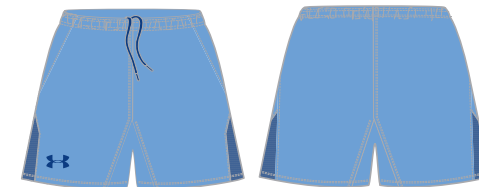
XS-3XL // YXS-YXL // 96% POLYESTER, 4% SPANDEX

- Cut and sew design
- Wicking and quick drying to keep you cool & comfortable
- Regular fit allowing free movement
- Available in both long and short sleeve
- Contrast fabric panels
- Embroidered logo to right chest and back neck
- Under Armour embroidered logo to lower sleeve

MAIN BODY



MESH PANELS



Cut & Sew

DYNAMO FOOTBALL SHORT FCS001

XS-3XL // YXS-YXL // 100% POLYESTER PIQUE

- Cut and sew design
- Wicking and anti-bacterial to keep you dry and fresh
- Adjustable drawcord to inner waist
- Regular fit allowing free movement
- Mesh panel to side with contrast piping
- Embroidered logo to lower right leg

MAIN BODY



MESH PANELS



HOCKEY +



I WILL™

HOCKEY SIZING

M MEN'S SIZE CHART

	XS	SM	MD	LG	XL	2XL	3XL	4XL	5XL
Chest	38 in	40 in	42 in	44 in	46 in	48 in	50 in	52 in	54 in
Waist	30 in	32 in	34 in	36 in	38 in	40 in	42 in	44 in	46 in

W WOMEN'S SIZE CHART

Size	8	10	12	14	16	18	20
Chest	32 in	34 in	36 in	38 in	40 in	42 in	44 in
Waist	25 in	27 in	29 in	31 in	33 in	35 in	37 in

Y YOUTH SIZE CHART

	CHILD	JUNIOR	YXS	YSM	YMD	YLG	YXL
Chest	23 in	25 in	27 in	29 in	31 in	33 in	35-36 in
Waist	16 in	18 in	20 in	22 in	24 in	26 in	28 in

FIT OPTIONS

SCOOPE SUBLIMATED STYLES

Scoop provides a regular fit to keep you cool and comfortable. This loose fit allows free movement, whilst eliminating the weight of extra fabric. Our regular fit maintains an excellent range of motion without restriction, allowing you to keep your mind on your performance.

DYNAMO CUT & SEW STYLES

Dynamo is also designed with a regular fit, keeping you cool, dry and comfortable during your match or training session. The looser fit lets you move freely, and maintain an excellent range of motion, whilst eliminating the bulk of extra fabric.

ADDITIONAL INFORMATION

GEO PRINTS

All our sublimated products can use our Geo Print patterns to give an extra edge to your kit. See the rugby section for print ideas.

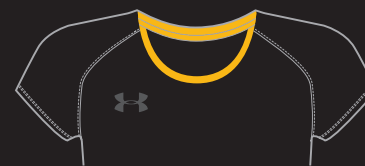
SUBLIMATION



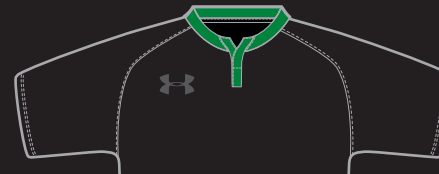
The majority of our hockey products use sublimation to apply the colour to the fabric. This process allows us to use almost any colour in the Pantone colour library for your kit design. Sublimation also means that sponsor logos and numbers/initials are printed into the garment, so there are no additional decoration costs. This applies across all our sports - look out for the Sublimation logo beneath each product.

Gradients and prints can also be applied to further enhance your Under Armour kit. See our range of prints below for more ideas. Prints can be applied to all sublimated playing kit across all sports.

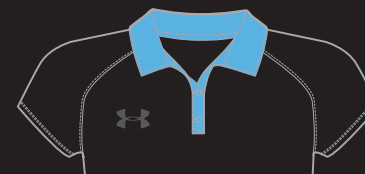
COLLAR STYLES



CREW COLLAR



NOTCH NECK COLLAR



TRADITIONAL COLLAR



WOMENS V COLLAR



SCOOP MEN'S HOCKEY SHIRT H002

XS-3XL // YXS-YXL // 100% POLYESTER

- Fully sublimated design
- Wicking & quick drying to keep you cool & comfortable
- Long and short sleeve option, 3 available collar styles
- Regular fit allowing free movement
- 3 number styles available
- Sublimated logo to right chest and back neck

Sublimated

M Y



SCOOP MEN'S HOCKEY SHIRT H018

XS-3XL // YXS-YXL // 100% POLYESTER

- Fully sublimated design
- Wicking & quick drying to keep you cool & comfortable
- Long and short sleeve option, 3 available collar styles
- Regular fit allowing free movement
- 3 number styles available
- Sublimated logo to right chest and back neck

Sublimated

M Y



SCOOP MEN'S HOCKEY SHIRT H004

XS-3XL // YXS-YXL // 100% POLYESTER

- Fully sublimated design
- Wicking & quick drying to keep you cool & comfortable
- Long and short sleeve option, 3 available collar styles
- Regular fit allowing free movement
- 3 number styles available
- Sublimated logo to right chest and back neck

Sublimated

M Y



SCOOP MEN'S HOCKEY SHIRT H019

XS-3XL // YXS-YXL // 100% POLYESTER

- Fully sublimated design
- Wicking & quick drying to keep you cool & comfortable
- Long and short sleeve option, 3 available collar styles
- Regular fit allowing free movement
- 3 number styles available
- Sublimated logo to right chest and back neck

Sublimated

M Y



SCOOP MEN'S HOCKEY SHIRT H007

XS-3XL // YXS-YXL // 100% POLYESTER

- Fully sublimated design
- Wicking & quick drying to keep you cool & comfortable
- Long and short sleeve option, 3 available collar styles
- Regular fit allowing free movement
- 3 number styles available
- Sublimated logo to right chest and back neck

Sublimated

M Y



SCOOP MEN'S HOCKEY SHIRT H020

XS-3XL // YXS-YXL // 100% POLYESTER

- Fully sublimated design
- Wicking & quick drying to keep you cool & comfortable
- Long and short sleeve option, 3 available collar styles
- Regular fit allowing free movement
- 3 number styles available
- Sublimated logo to right chest and back neck

Sublimated

M Y



SCOOP MEN'S HOCKEY SHIRT H016

XS-3XL // YXS-YXL // 100% POLYESTER

- Fully sublimated design
- Wicking & quick drying to keep you cool & comfortable
- Long and short sleeve option, 3 available collar styles
- Regular fit allowing free movement
- 3 number styles available
- Sublimated logo to right chest and back neck

Sublimated



SCOOP MEN'S HOCKEY SHIRT H017

XS-3XL // YXS-YXL // 100% POLYESTER

- Fully sublimated design
- Wicking & quick drying to keep you cool & comfortable
- Long and short sleeve option, 3 available collar styles
- Regular fit allowing free movement
- 3 number styles available
- Sublimated logo to right chest and back neck

Sublimated



ESCAPE CONTRAST PANEL SHORT ES030

SIZE 8-20 // YXS-YXL // 100% POLYESTER

- Available in 6", 8" and 10" length
- Wicking and quick drying
- Side pockets
- Contrast stitching and panel detail at back yoke
- Adjustable drawcord to waist
- Embroidered logo to lower right leg



MEN'S GOALKEEPER SHIRT HGK011

XS-3XL // YXS-YXL // 100% POLYESTER

- Fully sublimated design
- Wicking & quick drying to keep you cool & comfortable
- Long and short sleeve option, 3 available collar styles
- Regular fit allowing free movement
- 3 number styles available
- Sublimated logo to right chest and back neck

Sublimated



MEN'S GOALKEEPER SHIRT HGK004

XS-3XL // YXS-YXL // 100% POLYESTER

- Fully sublimated design
- Wicking & quick drying to keep you cool & comfortable
- Long and short sleeve option, 3 available collar styles
- Regular fit allowing free movement
- 3 number styles available
- Sublimated logo to right chest and back neck

Sublimated



SCOOP MEN'S HOCKEY SHORT HSH002

XS-3XL // YXS-YXL // 100% POLYESTER

- Fully sublimated design
- Wicking & quick drying to keep you cool & comfortable
- Adjustable drawcord to waist
- Regular fit allowing free movement
- 3 number styles available
- Sublimated logo to lower right leg

Sublimated





SCOOP WOMEN'S HOCKEY TOP HW013

SIZE 8-20 // YXS-YXL // 100% POLYESTER

- Fully sublimated design
- Wicking & quick drying to keep you cool & comfortable
- Long and short sleeve option, 4 available collar styles
- Regular fit allowing free movement
- 3 number styles available
- Sublimated logo to right chest and back neck

Sublimated



SCOOP WOMEN'S HOCKEY TOP HW002

SIZE 8-20 // YXS-YXL // 100% POLYESTER

- Fully sublimated design
- Wicking & quick drying to keep you cool and comfortable
- Long and short sleeve option, 3 available collar styles
- Regular fit allowing free movement
- 3 number styles available
- Sublimated logo to right chest and back neck

Sublimated



SCOOP WOMEN'S HOCKEY TOP HW014

SIZE 8-20 // YXS-YXL // 100% POLYESTER

- Fully sublimated design
- Wicking & quick drying to keep you cool & comfortable
- Long and short sleeve option, 4 available collar styles
- Regular fit allowing free movement
- 3 number styles available
- Sublimated logo to right chest and back neck

Sublimated



SCOOP WOMEN'S HOCKEY TOP HW012

SIZE 8-20 // YXS-YXL // 100% POLYESTER

- Fully sublimated design
- Wicking & quick drying to keep you cool & comfortable
- Long and short sleeve option, 4 available collar styles
- Regular fit allowing free movement
- 3 number styles available
- Sublimated logo to right chest and back neck

Sublimated



SCOOP WOMEN'S HOCKEY TOP HW015

SIZE 8-20 // YXS-YXL // 100% POLYESTER

- Fully sublimated design
- Wicking & quick drying to keep you cool & comfortable
- Long and short sleeve option, 4 available collar styles
- Regular fit allowing free movement
- 3 number styles available
- Sublimated logo to right chest and back neck

Sublimated



SCOOP WOMEN'S HOCKEY TOP HW016

SIZE 8-20 // YXS-YXL // 100% POLYESTER

- Fully sublimated design
- Wicking & quick drying to keep you cool & comfortable
- Long and short sleeve option, 4 available collar styles
- Regular fit allowing free movement
- 3 number styles available
- Sublimated logo to right chest and back neck

Sublimated





WOMEN'S GOALKEEPER TOP HWGK002

SIZE 8-20 // YXS-YXL // 100% POLYESTER

- Fully sublimated design
- Wicking & quick drying to keep you cool & comfortable
- Long sleeve only, 4 available collar styles
- Regular fit allowing free movement
- 3 number styles available
- Sublimated logo to right chest and back neck

Sublimated

W Y



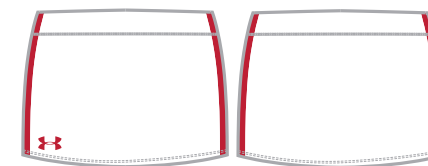
WOMEN'S GOALKEEPER TOP HWGK003

SIZE 8-20 // YXS-YXL // 100% POLYESTER

- Fully sublimated design
- Wicking & quick drying to keep you cool & comfortable
- Long sleeve only, 4 available collar styles
- Regular fit allowing free movement
- 3 number styles available
- Sublimated logo to right chest and back neck

Sublimated

W Y



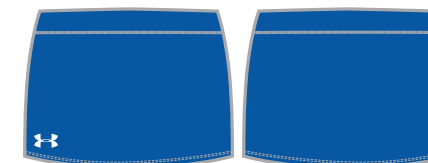
WOMEN'S SUBLIMATED SKORT HWSK001

SIZE 8-20 // YXS-YXL // 82% NYLON, 18% SPANDEX TRICOT

- Fully sublimated design
- Wicking and quick drying to keep you cool & comfortable
- Regular fit allowing free movement
- Available as a skirt or a skort
- Sublimated logo to lower right front

Sublimated

W Y



WOMEN'S SUBLIMATED SKORT HWSK003

SIZE 8-20 // YXS-YXL // 82% NYLON, 18% SPANDEX TRICOT

- Fully sublimated design
- Wicking and quick drying to keep you cool & comfortable
- Regular fit allowing free movement
- Available as a skirt or a skort
- Sublimated logo to lower right front

Sublimated

W Y



Cut & Sew

DYNAMO MEN'S HOCKEY SHIRT HP001

XS-3XL // YXS-YXL // 100% POLYESTER INTERLOCK

- Cut and sew design
- Wicking & quick drying to keep you cool and comfortable
- Short sleeve only, 3 available collar styles
- Regular fit allowing free movement
- 3 number styles available
- Embroidered logo to right chest, back neck & sleeve



Cut & Sew

DYNAMO MEN'S HOCKEY SHORT HCS001

XS-3XL // YXS-YXL // 100% POLYESTER INTERLOCK

- Cut and sew design
- Wicking & quick drying to keep you cool and comfortable
- Adjustable drawcord to waist
- Regular fit allowing free movement
- 3 number styles available
- Embroidered logo to lower right leg

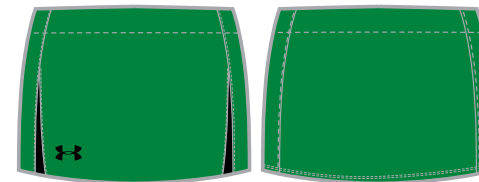


Cut & Sew

DYNAMO WOMEN'S HOCKEY SHIRT HWC001

SIZE 8-20 // YXS-YXL // 100% POLYESTER INTERLOCK

- Cut and sew design
- Wicking & quick drying to keep you cool and comfortable
- Short sleeve only, 4 available collar styles
- Regular fit allowing free movement
- 3 number styles available
- Embroidered logo to right chest, back neck & sleeve



Cut & Sew

DYNAMO WOMEN'S HOCKEY SKORT HWCSK001

SIZE 8-20 // YXS-YXL // 100% POLYESTER INTERLOCK

- Cut and sew design
- Wicking & quick drying to keep you cool and comfortable
- Available as a skort or a skirt
- Regular fit allowing free movement
- 3 number styles available
- Embroidered logo to lower right front



BASKETBALL



I WILL!

BASKETBALL SIZING

M MEN'S SIZE CHART

	XS	SM	MD	LG	XL	2XL	3XL	4XL	5XL
Chest	38 in	40 in	42 in	44 in	46 in	48 in	50 in	52 in	54 in
Waist	30 in	32 in	34 in	36 in	38 in	40 in	42 in	44 in	46 in

Y YOUTH SIZE CHART

	CHILD	JUNIOR	YXS	YSM	YMD	YLG	YXL
Chest	23 in	25 in	27 in	29 in	31 in	33 in	35-36 in
Waist	16 in	18 in	20 in	22 in	24 in	26 in	28 in

STYLE OPTIONS

DYNAMO CUT & SEW STYLE

Dynamo cut and sew styles offer a durable and stretch-free alternative to sublimation. The regular fit allows free movement, and maintains an excellent range of motion without feeling loose or oversized.

SWITCH SUBLIMATED STYLE

Our Switch styles are all fully sublimated, allowing you to choose almost any colour from the Pantone colour library. Switch offers a more customisable teamwear option, as all design elements, colours and sponsor logos are sublimated into the fabric, allowing you to create unique designs.

IMPORTANT STYLE INFORMATION

SWITCH SUBLIMATED STYLES

Colours: All colours available from Pantone colour library

Sleeves: Available in sleeveless only

Sizing: Mens XS-5XL, Youth XS-XL

ELITE CUT & SEW STYLE

Colours: Sublimated main body with mesh inserts

Sleeves: Available in sleeveless only

Sizing: Mens XS-5XL, Youth XS-XL

SUBLIMATION



The majority of our basketball products use sublimation to apply the colour to the fabric. This process allows us to use almost any colour in the Pantone colour library for your kit design. Sublimation also means that sponsor logos and numbers/initials are printed into the garment, so there are no additional decoration costs. This applies across all our sports - look out for the Sublimation logo beneath each product.

Gradients and prints can also be applied to further enhance your Under Armour kit. See our range of prints below for more ideas. Prints can be applied to all sublimated playing kit across all sports.



Cut & Sew

ELITE BASKETBALL VEST B006

XS-5XL // YXS-YXL // 100% POLYESTER FINE PIQUE

- Ergonomic cut and sew design with sublimated body
- Mesh panelling for increased ventilation
- Lower side openings for greater range of motion
- Loose fit allowing free movement
- 3 number and letter styles available
- Sublimated logo to right chest



Cut & Sew

ELITE BASKETBALL SHORT BS006M

XS-5XL // YXS-YXL // 100% POLYESTER FINE PIQUE

- Ergonomic cut and sew design with sublimated body
- Mesh panelling for increased ventilation
- Adjustable drawcord to waist
- Loose fit allowing free movement
- 3 number and letter styles available
- Sublimated logo to lower right leg



BASKETBALL VEST B001

XS-5XL // YXS-YXL // 100% POLYESTER FINE PIQUE

- Fully sublimated design
- Wicking & quick drying to keep you cool and comfortable
- Lower side openings for greater range of motion
- Loose fit allowing free movement
- 3 number and letter styles available
- Sublimated logo to right chest

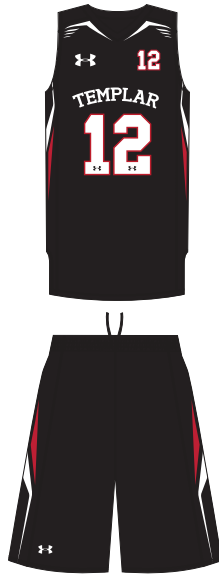


BASKETBALL SHORT BS001

XS-5XL // YXS-YXL // 100% POLYESTER FINE PIQUE

- Fully sublimated design
- Wicking & quick drying to keep you cool and comfortable
- Adjustable drawcord to waist
- Loose fit allowing free movement
- 3 number and letter styles available
- Sublimated logo to lower right leg





BASKETBALL VEST B002

XS-5XL // YXS-YXL // 100% POLYESTER FINE PIQUE

- Fully sublimated design
- Wicking & quick drying to keep you cool and comfortable
- Lower side openings for greater range of motion
- Loose fit allowing free movement
- 3 number and letter styles available
- Sublimated logo to right chest

Sublimated

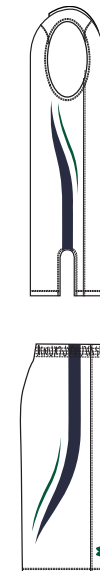
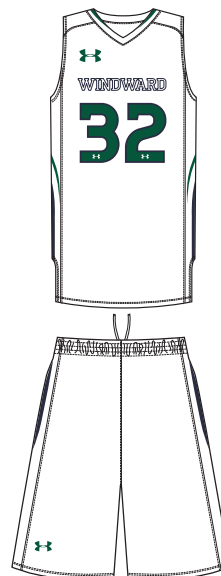
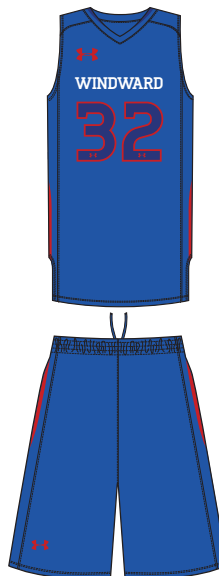


BASKETBALL SHORT BS002

XS-5XL // YXS-YXL // 100% POLYESTER FINE PIQUE

- Fully sublimated design
- Wicking & quick drying to keep you cool and comfortable
- Adjustable drawcord to waist
- Loose fit allowing free movement
- 3 number and letter styles available
- Sublimated logo to lower right leg

Sublimated



BASKETBALL VEST B004

XS-5XL // YXS-YXL // 100% POLYESTER FINE PIQUE

- Fully sublimated design
- Wicking & quick drying to keep you cool and comfortable
- Lower side openings for greater range of motion
- Loose fit allowing free movement
- 3 number and letter styles available
- Sublimated logo to right chest

Sublimated



BASKETBALL SHORT BS004

XS-5XL // YXS-YXL // 100% POLYESTER FINE PIQUE

- Fully sublimated design
- Wicking & quick drying to keep you cool and comfortable
- Adjustable drawcord to waist
- Loose fit allowing free movement
- 3 number and letter styles available
- Sublimated logo to lower right leg

Sublimated



ATHLETICS +



I WILL.™

ATHLETICS SIZING

M MEN'S SIZE CHART

	XS	SM	MD	LG	XL	2XL	3XL	4XL	5XL
Chest	38 in	40 in	42 in	44 in	46 in	48 in	50 in	52 in	54 in
Waist	30 in	32 in	34 in	36 in	38 in	40 in	42 in	44 in	46 in

W WOMEN'S SIZE CHART

	XS	S	M	L	XL	2XL	3XL
Size	8	10	12	14	16	18	20
Chest	32 in	34 in	36 in	38 in	40 in	42 in	44 in
Waist	25 in	27 in	29 in	31 in	33 in	35 in	37 in

Y YOUTH SIZE CHART

	CHILD	JUNIOR	YXS	YSM	YMD	YLG	YXL
Chest	23 in	25 in	27 in	29 in	31 in	33 in	35-36 in
Waist	16 in	18 in	20 in	22 in	24 in	26 in	28 in

FIT OPTIONS

CUT & SEW STYLE

Our athletic garments provide a regular fit, without the weight of excess fabric. This comfortable fit allows an excellent range of motion, whilst keeping you cool and dry.

IMPORTANT STYLE INFORMATION

CUT & SEW STYLE

Collars: Crew Neck

Sleeves: All athletics vests are sleeveless

Sizing: Mens XS-3XL, Womens size 8-20, Youth XS-XL

SUBLIMATION



The majority of our athletics products use sublimation to apply the colour to the fabric. This process allows us to use almost any colour in the Pantone colour library for your kit design. Sublimation also means that sponsor logos and numbers/initials are printed into the garment, so there are no additional decoration costs. This applies across all our sports - look out for the Sublimation logo beneath each product.

Gradients and prints can also be applied to further enhance your Under Armour kit. See our range of prints below for more ideas. Prints can be applied to all sublimated playing kit across all sports.



Cut & Sew

MEN'S ATHLETIC SINGLET A001

XS-5XL // YXS-YXL // 100% POLYESTER

- Cut and sew design - Also available in sublimation*
- Wicking & quick drying to keep you cool & comfortable
- Contrast side panels
- Regular fit allowing free movement
- 3 number styles available
- Heatseal logo to right chest and back neck



Cut & Sew

MEN'S ATHLETIC SINGLET A002

XS-5XL // YXS-YXL // 100% POLYESTER

- Cut and sew design - Also available in sublimation*
- Wicking & quick drying to keep you cool & comfortable
- Contrast panel across chest
- Regular fit allowing free movement
- 3 number styles available
- Heatseal logo to right chest and back neck



Cut & Sew

MEN'S ATHLETIC SINGLET A003

XS-5XL // YXS-YXL // 100% POLYESTER

- Cut and sew design - Also available in sublimation*
- Wicking & quick drying to keep you cool & comfortable
- Contrast side and shoulder panels
- Regular fit allowing free movement
- 3 number styles available
- Heatseal logo to right chest and back neck



Cut & Sew

MEN'S ATHLETIC SHORT AS001

XS-5XL // YXS-YXL // 100% POLYESTER DOUBLE WEAVE

- Cut and sew design
- Wicking & quick drying to keep you cool & comfortable
- Contrast side panels
- Regular fit allowing free movement
- Adjustable drawcord to waist
- Heatseal logo to lower right leg



MEN'S SUBLIMATED SINGLET A001S

XS-5XL // YXS-YXL // 100% POLYESTER

- New fully sublimated vest
- Wicking & quick drying to keep you cool & comfortable
- Regular fit allowing free movement
- 3 number styles available
- Sublimated logo to right chest and back neck



MEN'S SUBLIMATED SHORT AS01S

XS-5XL // YXS-YXL // 100% POLYESTER DOUBLE WEAVE

- New fully sublimated design
- Wicking & quick drying to keep you cool & comfortable
- Regular fit allowing free movement
- Adjustable drawcord to waist
- Sublimated logo to lower right leg



MEN'S ATHLETIC SINGLET A002S

XS-5XL // YXS-YXL // 100% POLYESTER

- New fully sublimated vest
- Wicking & quick drying to keep you cool & comfortable
- Regular fit allowing free movement
- 3 number styles available
- Sublimated logo to right chest and back neck



*Please note that the sublimated version of this style will be more expensive than the standard cut & sew style. See price list for more information.



Cut & Sew

WOMEN'S ATHLETIC SINGLET AW001

SIZE 8-20 // YXS-YXL // 100% POLYESTER

- Cut and sew design - Also available in sublimation*
- Wicking & quick drying to keep you cool & comfortable
- Contrast panel across chest
- Regular fit allowing free movement
- 3 number styles available
- Heatseal logo to right chest and back neck logo



Cut & Sew

WOMEN'S ATHLETIC SINGLET AW002

SIZE 8-20 // YXS-YXL // 100% POLYESTER

- Cut and sew design - Also available in sublimation*
- Wicking & quick drying to keep you cool & comfortable
- Contrast panel across chest
- Regular fit allowing free movement
- 3 number styles available
- Heatseal logo to right chest and back neck

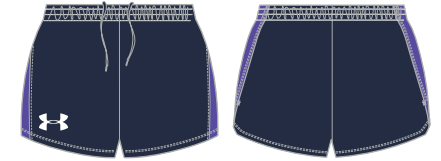


Cut & Sew

WOMEN'S ATHLETIC SINGLET AW003

SIZE 8-20 // YXS-YXL // 100% POLYESTER

- Cut and sew design - Also available in sublimation*
- Wicking & quick drying to keep you cool & comfortable
- Contrast panel across chest
- Regular fit allowing free movement
- 3 number styles available
- Heatseal logo to right chest and back neck

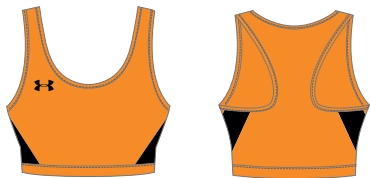


Cut & Sew

WOMEN'S ATHLETIC SHORT ASW001

SIZE 8-20 // YXS-YXL // 100% POLYESTER DOUBLE WEAVE

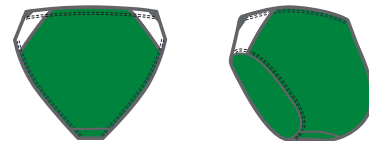
- Cut and sew design
- Wicking & quick drying to keep you cool & comfortable
- Contrast side panels
- Regular fit allowing free movement
- Adjustable drawcord to waist
- Heatseal logo to lower right leg



WOMEN'S RUN BRA WM030

SIZE 8-20 // YXS-YXL // 100% POLYESTER

- Fully sublimated design
- Wicking & quick drying to keep you cool & comfortable
- Crop fit for free movement
- Sublimated logo to front and back



WOMEN'S RUN KNICKER WM029

SIZE 8-20 // YXS-YXL // 100% POLYESTER

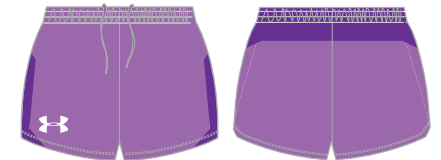
- Sublimated design
- Wicking & quick drying to keep you cool & comfortable
- Crop fit for free movement
- Sublimated logo to front and back



WOMEN'S SUBLIMATED SINGLET AW01S

XS-5XL // YXS-YXL // 100% POLYESTER

- New fully sublimated option
- Wicking & quick drying to keep you cool & comfortable
- Regular fit allowing free movement
- 3 number styles available
- Sublimated logo to right chest and back neck



WOMEN'S SUBLIMATED SHORT ASW01S

XS-5XL // YXS-YXL // 100% POLYESTER DOUBLE WEAVE

- New sublimated design
- Wicking & quick drying to keep you cool & comfortable
- Regular fit allowing free movement
- Adjustable drawcord to waist
- Sublimated logo to lower right leg



*Please note that the sublimated version of this style will be more expensive than the standard cut & sew style. See price list for more information.

CRICKET +



I WILL

CRICKET SIZING

M MEN'S SIZE CHART

	XS	SM	MD	LG	XL	2XL	3XL	4XL	5XL
Chest	38 in	40 in	42 in	44 in	46 in	48 in	50 in	52 in	54 in
Waist	30 in	32 in	34 in	36 in	38 in	40 in	42 in	44 in	46 in

Y YOUTH SIZE CHART

	CHILD	JUNIOR	YXS	YSM	YMD	YLG	YXL
Chest	23 in	25 in	27 in	29 in	31 in	33 in	35-36 in
Waist	16 in	18 in	20 in	22 in	24 in	26 in	28 in

COLLAR STYLES



HYBRID COLLAR



CREW COLLAR

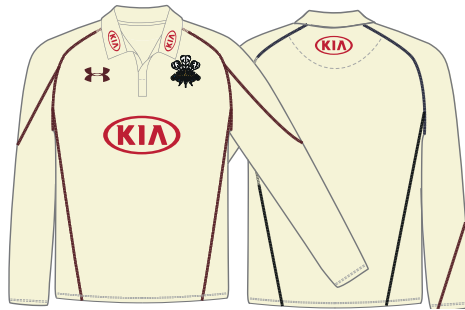


TRADITIONAL COLLAR

FIT OPTIONS

REGULAR

Our cricket garments offer a looser fit, whilst eliminating the bulk of extra fabric and improving your range of motion. This allows you to get on with your sport whilst remaining cool, comfortable and free to move - so you can remain focussed on your performance without the worry of your gear letting you down.



Cut & Sew

LONG SLEEVE CRICKET SHIRT CR011

XS-3XL // YXS-YXL // 100% POLYESTER INTERLOCK

- Cut and sew design
- Wicking and quick drying to keep you cool & comfortable
- Embroidered logo to right chest & back neck
- Loop back collar

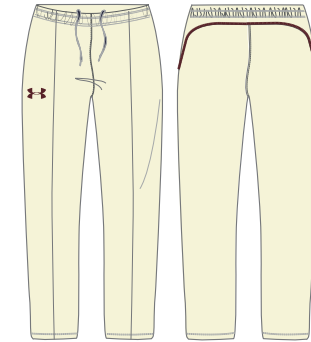


Cut & Sew

SHORT SLEEVE CRICKET SHIRT CR022

XS-3XL // YXS-YXL // 100% POLYESTER INTERLOCK

- Cut and sew design
- Wicking and quick drying to keep you cool & comfortable
- Embroidered logo to right chest & back neck
- Loop back collar



Cut & Sew

CRICKET TROUSER CR003

XS-3XL // YXS-YXL // 100% POLYESTER PIQUE

- Cut and sew design
- Loose fit to keep you cool and comfortable
- Embroidered logo to upper right leg
- Side pockets and adjustable drawcord to waist

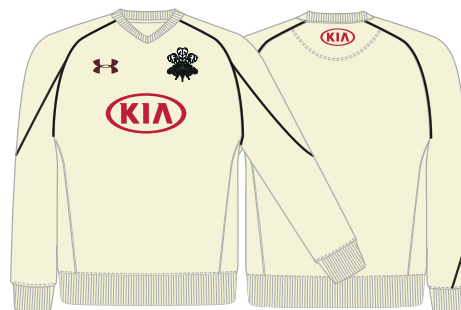


Cut & Sew

CRICKET GILET CR004

XS-3XL // YXS-YXL // 100% POLYESTER HONEYCOMB WITH BACK BRUSH+ W/R

- Cut and sew design
- Elasticated hem and arm openings for comfort
- Embroidered logo to right chest and back neck



Cut & Sew

CRICKET SWEATER CR055

XS-3XL // YXS-YXL // 100% POLYESTER HONEYCOMB WITH BACK BRUSH+ W/R

- Cut and sew design
- Elasticated hem and cuffs for comfort
- Embroidered logo to right chest and back neck





MEN'S 20/20 CRICKET SHIRT CR011

XS-3XL // YXS-YXL // 100% POLYESTER

- Sublimated main body
- Cut and sew mesh underarm panels
- Long and short sleeve option, 2 available collar styles
- Regular fit allowing free movement
- 3 number styles available - see page 76
- Sublimated logo to right chest and back neck

Sublimated

M Y



MEN'S 20/20 LS CRICKET SHIRT CR011L

XS-3XL // YXS-YXL // 100% POLYESTER

- Fully sublimated design
- Cut and sew mesh underarm panels
- Long and short sleeve option, 2 available collar styles
- Regular fit allowing free movement
- 3 number styles available - see page 76
- Sublimated logo to right chest and back neck

Sublimated

M Y



SUBLIMATED CRICKET TROUSER CR033

XS-3XL // YXS-YXL // 100% POLYESTER PIQUE

- Fully sublimated design
- Loose fit to keep you cool and comfortable
- Embroidered logo to upper right leg
- Side pockets and adjustable drawcord to waist

Sublimated

M Y



MEN'S 20/20 CRICKET SHIRT CR008

XS-3XL // YXS-YXL // 100% POLYESTER

- Fully sublimated design
- Wicking & quick drying to keep you cool and comfortable
- Long and short sleeve option, 2 available collar styles
- Regular fit allowing free movement
- 3 number styles available - see page 76
- Sublimated logo to right chest and back neck

Sublimated

M Y



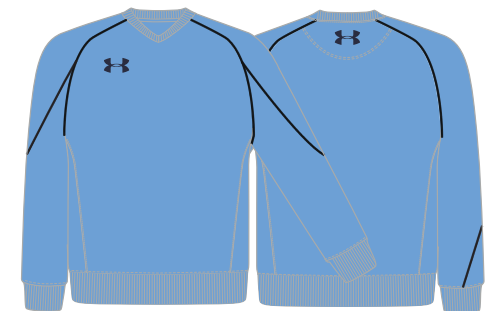
MEN'S 20/20 CRICKET SHIRT CR008L

XS-3XL // YXS-YXL // 100% POLYESTER

- Fully sublimated design
- Wicking & quick drying to keep you cool and comfortable
- Long and short sleeve option, 2 available collar styles
- Regular fit allowing free movement
- 3 number styles available - see page 76
- Sublimated logo to right chest and back neck

Sublimated

M Y



CRICKET SWEATER CR055 (ALSO AVAILABLE IN GILET CR004)

XS-3XL // YXS-YXL // 100% POLYESTER HONEYCOMB WITH BACK BRUSH+ W/R

- Cut and sew design
- Elasticated hem and cuffs for comfort
- Embroidered logo to right chest and back neck



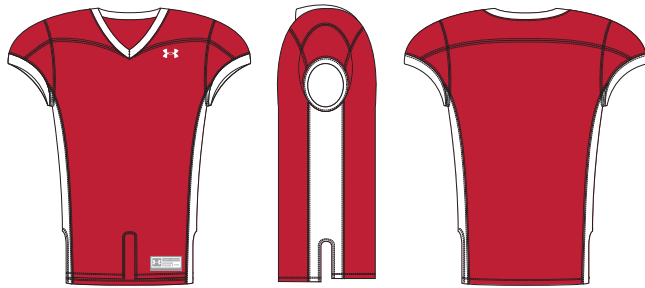
M Y

OTHER SPORTS +



IVILLI™

AMERICAN FOOTBALL RANGE



ADULT STOCK HAMMER FOOTBALL JERSEY

SM-4XL // TRICOT MESH FRONT & BACK BODY & MESH PANELS

- Signature full length game jersey with double ply
- 4-way stretch mesh contrast side inserts
- Triple bartack reinforced with set in mitred V neck collar
- Vented at front and side hem for improved fit and comfort
- 3 number styles available
- Cut & sew construction with heatseal logos available



ADULT STOCK CRUSHER FOOTBALL JERSEY

SM-4XL // TRICOT MESH FRONT & BACK BODY & MESH PANELS

- Signature full length game jersey in stretch mesh fabric
- 4-way stretch mesh contrast side inserts
- Triple bartack reinforced with set in mitred V neck collar
- Vented at front and side hem for improved fit and comfort
- 3 number styles available
- Cut & sew construction with heatseal logos available



ADULT STOCK INSINCT FOOTBALL PANT

SM-3XL // 4 WAY STRETCH KNIT FABRICATION

- Tunnel waistband with interior UA branded gripper
- No fly construction in front for optimal fit
- Cover seamed throughout for additional strength
- Pants available with a slotted waist with additional charge
- Performance game pant in signature knit fabrication
- Heatseal logos available



ROWING RANGE



MENS SUBLIMATED ROWING SUIT RW002

XS-5XL // YXS-YXL // 100% POLYESTER

- New cut and sew design with stretch panelling
- Wicking and quick drying to keep you cool and comfortable
- Skin tight fit for superior movement
- Contrast flatlock stitching detail
- Sublimated logo at chest and back neck



ROWING JACKET RW003

XS-5XL // 100% POLYESTER

- Fully taped waterproof to protect you in all conditions
- Durable yet comfortable woven fabrication
- Volume adjuster to hem and elastic binding on cuff
- Mesh lining to keep you cool and comfortable
- Heatseal logo to right chest and back neck



MEN'S BESPOKE TRAINING



**LEIGH
HALFPENNY**

I WILL.TM

BESPOKE TRAINING

M MEN'S SIZING

	XS	SM	MD	LG	XL	2XL	3XL	4XL	5XL
Chest	38 in	40 in	42 in	44 in	46 in	48 in	50 in	52 in	54 in
Waist	30 in	32 in	34 in	36 in	38 in	40 in	42 in	44 in	46 in

W WOMEN'S SIZING

Size	8	10	12	14	16	18	20
Chest	32 in	34 in	36 in	38 in	40 in	42 in	44 in
Waist	25 in	27 in	29 in	31 in	33 in	35 in	37 in

Y YOUTH SIZING

	CHILD	JUNIOR	YXS	YSM	YMD	YLG	YXL
Chest	23 in	25 in	27 in	29 in	31 in	33 in	35-36 in
Waist	16 in	18 in	20 in	22 in	24 in	26 in	28 in

COLOURS

BESPOKE TRAINING

Garments from the Legend, Premier, Escape and Motivate off field ranges are available in the colours shown below:

- BLACK
- WHITE
- RED
- NAVY
- SKY
- ROYAL
- FOREST GREEN
- EMERALD
- MAROON
- GOLD
- PURPLE

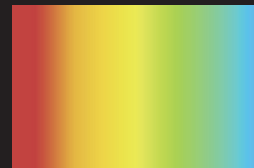
Please Note:

Some garments are not available in all colours shown above. See individual garment information for colour availability.

CONTRAST STITCH & PIPING

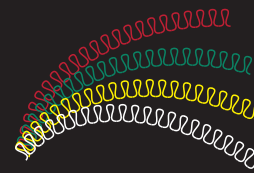
CHARGE PIPING

The Charge range includes contrast piping, which can use a broader colour scheme than the standard cut and sew colours. These can be chosen from the Pantone colour library. For more information, please contact us.



VAULT CONTRAST STITCH

The Vault range includes a contrast stitch which can use a broader colour scheme than the standard cut and sew colours. We can use almost any colour for the contrast stitching, so we can match you off field garments with your team colours.



FIT OPTIONS

UNDER ARMOUR REGULAR FIT

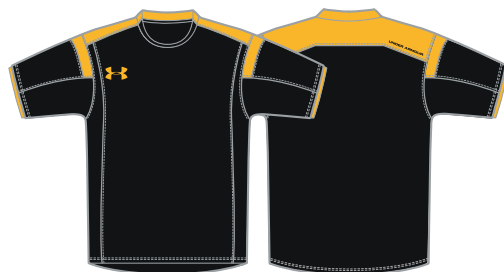
All our bespoke off field garments are designed with a regular fit, eliminating the bulk of extra fabric whilst improving your range of motion. The looser fit allows you to focus on your performance, whilst your kit will deliver the solid performance you'd expect from Under Armour.



FLOW TECH™ TEE FL003

XS-5XL // YXS-YXL // 100% POLYESTER

- The newly upgraded essential Under Armour tee
- Lightweight brushed poly fabrication with soft, comfortable hand - with wicking Armourblock technology
- Superior moisture transport and enhanced dry times
- Contrast panels to shoulder and back
- Heatseal logo on right chest and back neck



FLOW CHARGED COTTON TEE FL002

XS-5XL // YXS-YXL // 95% COTTON, 5% ELASTANE

- Charged with moisture wicking, quick dry technology
- Dries faster than ordinary cotton - with Armourblock
- Soft, comfortable pima cotton fabrication
- Built with 4-way stretch for superior comfort and mobility
- Contrast panels to shoulder and back
- Embroidered logo on right chest and back neck



FLOW PERFORMANCE POLO FL004

XS-5XL // YXS-YXL // 95% POLYESTER, 5% ELASTANE

- Superior Heatgear fabric keeps you cool and dry
- Anti-pick and anti-pill finish for long lasting durability
- UPF 30+ protects against harmful sun rays
- Contrast panels to shoulder and back
- 3 buttons to collar
- Embroidered logo on right chest and back neck



FLOW ARMOUR FLEECE HOODY FL005

XS-5XL // YXS-YXL // 100% POLYESTER

- Feels like a cotton sweatshirt, performs like Under Armour
- Hard-faced fleece traps heat for warmth
- Superior moisture transport keeps you dry & comfortable
- Contrast panels to shoulder and back
- Double pocket to front
- Embroidered logo on right chest



FLOW RANGE



FLOW TRACK JACKET FL008

XS-5XL // YXS-YXL // 100% POLYESTER

- Soft and lightweight for extra comfort and mobility
- Superior moisture transport keeps you dry and comfortable
- Mesh lining for breathability, with open vent to back
- Side pockets with zips
- Contrast panels to shoulder and back
- Embroidered logo to right chest and back neck



FLOW TRACKPANT FL009

XS-5XL // YXS-YXL // 100% POLYESTER DOUBLE WEAVE

- Superior moisture transport keeps you dry and comfortable
- Mesh lining for breathability
- Side pockets - no zips
- Available with a full zip or calf zip
- Embroidered logo to upper right leg
- Drawcord to waist, concealed zip to leg



FLOW LS 1/4 ZIP TECH TEE FL029

XS-5XL // YXS-YXL // 100% POLYESTER

- Soft and lightweight for extra comfort and mobility
- Superior moisture transport keeps you dry and comfortable
- Mesh lining for breathability, with open vent to back
- Side pockets with zips
- Contrast panels to shoulder and back
- Heatseal logo to right chest and back neck

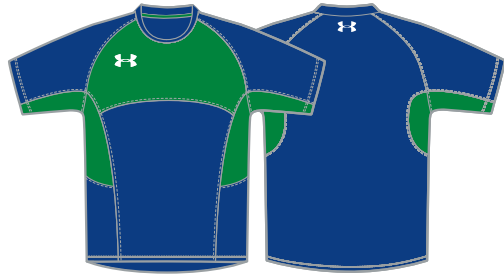


FLOW LS FULL ZIP HOODED TECH TEE FL028

XS-5XL // YXS-YXL // 100% POLYESTER

- Soft and lightweight for extra comfort and mobility
- Superior moisture transport keeps you dry and comfortable
- Mesh lining for breathability, with open vent to back
- Side pockets with zips
- Contrast panels to shoulder and back
- Heatseal logo to right chest and back neck

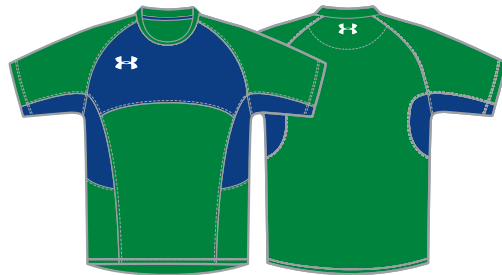




ADVANCE TECH™ TEE AD003

XS-5XL // YXS-YXL // 100% POLYESTER

- The newly upgraded essential Under Armour tee
- Lightweight brushed poly fabrication with soft, comfortable hand - with wicking Armourblock technology
- Superior moisture transport and enhanced dry times
- Contrast panels to chest and under arm
- Heatseal logo on right chest and back neck



ADVANCE CHARGED COTTON TEE AD002

XS-5XL // YXS-YXL // 95% COTTON, 5% ELASTANE

- Charged with moisture wicking, quick dry technology
- Dries faster than ordinary cotton - with Armourblock
- Soft, comfortable pima cotton fabrication
- Built with 4-way stretch for superior comfort and mobility
- Contrast panels to chest and under arm
- Embroidered logo on right chest and back neck



ADVANCE PERFORMANCE POLO AD004

XS-5XL // YXS-YXL // 95% POLYESTER, 5% ELASTANE

- Superior Heatgear fabric keeps you cool and dry
- Anti-pick and anti-pill finish for long lasting durability
- UPF 30+ protects against harmful sun rays
- Contrast panels to chest and under arm
- 3 buttons to collar
- Embroidered logo on right chest and back neck



ADVANCE ARMOUR FLEECE HOODY AD005

XS-5XL // YXS-YXL // 100% POLYESTER

- Feels like a cotton sweatshirt, performs like Under Armour
- Hard-faced fleece traps heat for warmth
- Superior moisture transport keeps you dry & comfortable
- Contrast panels to chest and under arm
- Double pocket to front
- Embroidered logo on right chest



ADVANCE RANGE



ADVANCE TRACK JACKET AD008

XS-5XL // YXS-YXL // 100% POLYESTER

- Soft and lightweight for extra comfort and mobility
- Superior moisture transport keeps you dry and comfortable
- Mesh lining for breathability, with open vent to back
- Side pockets with zips
- Contrast panels to chest and under arm
- Embroidered logo to right chest and back neck



ADVANCE TRACKPANT AD009

XS-5XL // YXS-YXL // 100% POLYESTER DOUBLE WEAVE

- Superior moisture transport keeps you dry and comfortable
- Mesh lining for breathability
- Side pockets - no zips
- Available with a full zip or calf zip
- Embroidered logo to upper right leg
- Drawcord to waist, concealed zip to leg



ADVANCE LS 1/4 ZIP TECH TEE AD029

XS-5XL // YXS-YXL // 100% POLYESTER

- Soft and lightweight for extra comfort and mobility
- Superior moisture transport keeps you dry and comfortable
- Mesh lining for breathability, with open vent to back
- Side pockets with zips
- Contrast panels to chest and under arm
- Heatseal logo to right chest and back neck



ADVANCE LS FULL ZIP HOODED TECH TEE AD028

XS-5XL // YXS-YXL // 100% POLYESTER

- Soft and lightweight for extra comfort and mobility
- Superior moisture transport keeps you dry and comfortable
- Mesh lining for breathability, with open vent to back
- Side pockets with zips
- Contrast panels to chest and under arm
- Heatseal logo to right chest and back neck





CHARGE TECH™ TEE CH003

XS-5XL // YXS-YXL // 100% POLYESTER

- The newly upgraded essential Under Armour tee
- Lightweight brushed poly fabrication with soft, comfortable hand - with wicking Armourblock technology
- Superior moisture transport and enhanced dry times
- Contrast panels to under arm
- Heatseal logo on right chest and back neck



CHARGE CHARGED COTTON TEE CH002

XS-5XL // YXS-YXL // 95% COTTON, 5% ELASTANE

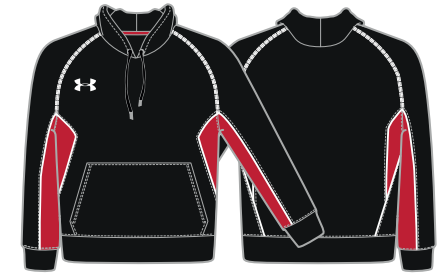
- Charged with moisture wicking, quick dry technology
- Dries faster than ordinary cotton - with Armourblock
- Soft, comfortable pima cotton fabrication
- Built with 4-way stretch for superior comfort and mobility
- Contrast panels to under arm
- Embroidered logo on right chest and back neck



CHARGE PERFORMANCE POLO CH004

XS-5XL // YXS-YXL // 95% POLYESTER, 5% ELASTANE

- Superior Heatgear fabric keeps you cool and dry
- Anti-pick and anti-pill finish for long lasting durability
- UPF 30+ protects against harmful sun rays
- Contrast panels to under arm
- 3 buttons to collar
- Embroidered logo on right chest and back neck



CHARGE ARMOUR FLEECE HOODY CH005

XS-5XL // YXS-YXL // 100% POLYESTER

- Feels like a cotton sweatshirt, performs like Under Armour
- Hard-faced fleece traps heat for warmth
- Superior moisture transport keeps you dry & comfortable
- Contrast panels to under arm
- Double pocket to front
- Embroidered logo on right chest



CHARGE RANGE



CHARGE TRACK JACKET CH008

XS-5XL // YXS-YXL // 100% POLYESTER

- Soft and lightweight for extra comfort and mobility
- Superior moisture transport keeps you dry and comfortable
- Mesh lining for breathability, with open vent to back
- Side pockets with zips
- Contrast panels to under arm
- Embroidered logo to right chest and back neck



CHARGE TRACKPANT CH009

XS-5XL // YXS-YXL // 100% POLYESTER DOUBLE WEAVE

- Superior moisture transport keeps you dry and comfortable
- Mesh lining for breathability
- Side pockets - no zips
- Available with a full zip or calf zip
- Embroidered logo to upper right leg
- Drawcord to waist, concealed zip to leg



CHARGE LS 1/4 ZIP TECH TEE CH029

XS-5XL // YXS-YXL // 100% POLYESTER

- Soft and lightweight for extra comfort and mobility
- Superior moisture transport keeps you dry and comfortable
- Mesh lining for breathability, with open vent to back
- Side pockets with zips
- Contrast panels to under arm
- Heatseal logo to right chest and back neck

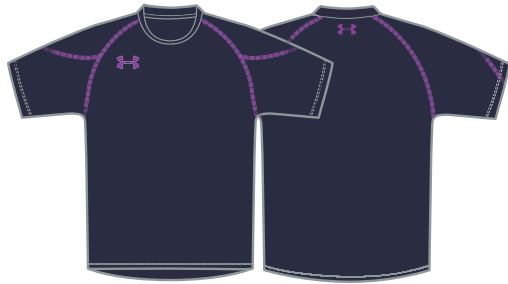


CHARGE LS FULL ZIP HOODED TECH TEE CH028

XS-5XL // YXS-YXL // 100% POLYESTER

- Soft and lightweight for extra comfort and mobility
- Superior moisture transport keeps you dry and comfortable
- Mesh lining for breathability, with open vent to back
- Side pockets with zips
- Contrast panels to under arm
- Heatseal logo to right chest and back neck

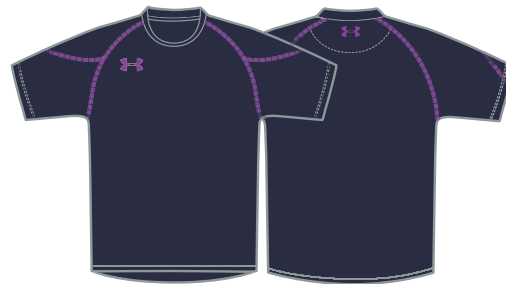




VAULT TECH™ TEE VA003

XS-5XL // YXS-YXL // 100% POLYESTER

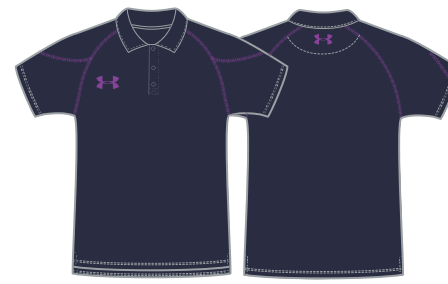
- The newly upgraded essential Under Armour tee
- Lightweight brushed poly fabrication with soft, comfortable hand - with wicking Armourblock technology
- Superior moisture transport and enhanced dry times
- Contrast stitch to arm seam and sleeve
- Heatseal logo on right chest and back neck



VAULT CHARGED COTTON TEE VA002

XS-5XL // YXS-YXL // 95% COTTON, 5% ELASTANE

- Charged with moisture wicking, quick dry technology
- Dries faster than ordinary cotton - with Armourblock
- Soft, comfortable pima cotton fabrication
- Built with 4-way stretch for superior comfort and mobility
- Contrast stitch to arm seam and sleeve
- Embroidered logo on right chest and back neck



VAULT PERFORMANCE POLO VA004

XS-5XL // YXS-YXL // 95% POLYESTER, 5% ELASTANE

- Superior Heatgear fabric keeps you cool and dry
- Anti-pick and anti-pill finish for long lasting durability
- UPF 30+ protects against harmful sun rays
- Contrast stitch to arm seam and sleeve
- 3 buttons to collar
- Embroidered logo on right chest and back neck



VAULT ARMOUR FLEECE HOODY VA005

XS-5XL // YXS-YXL // 100% POLYESTER

- Feels like a cotton sweatshirt, performs like Under Armour
- Hard-faced fleece traps heat for warmth
- Superior moisture transport keeps you dry & comfortable
- Contrast stitch to arm seam and sleeve
- Double pocket to front
- Embroidered logo on right chest



VAULT RANGE



VAULT TRACK JACKET VA008

XS-5XL // YXS-YXL // 100% POLYESTER

- Soft and lightweight for extra comfort and mobility
- Superior moisture transport keeps you dry and comfortable
- Mesh lining for breathability, with open vent to back
- Side pockets with zips
- Contrast stitch to arm seam and sleeve
- Embroidered logo to right chest and back neck



VAULT TRACKPANT VA009

XS-5XL // YXS-YXL // 100% POLYESTER DOUBLE WEAVE

- Superior moisture transport keeps you dry and comfortable
- Mesh lining for breathability
- Side pockets - no zips
- Available with a full zip or calf zip
- Embroidered logo to upper right leg
- Drawcord to waist, concealed zip to leg



VAULT LS 1/4 ZIP TECH TEE VA029

XS-5XL // YXS-YXL // 100% POLYESTER

- Soft and lightweight for extra comfort and mobility
- Superior moisture transport keeps you dry and comfortable
- Mesh lining for breathability, with open vent to back
- Side pockets with zips
- Contrast stitch to arm seam and sleeve
- Heatseal logo to right chest and back neck

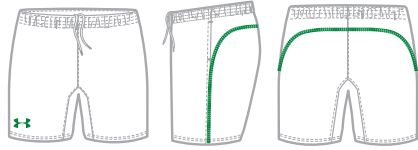


VAULT LS FULL ZIP HOODED TECH TEE VA028

XS-5XL // YXS-YXL // 100% POLYESTER

- Soft and lightweight for extra comfort and mobility
- Superior moisture transport keeps you dry and comfortable
- Mesh lining for breathability, with open vent to back
- Side pockets with zips
- Contrast stitch to arm seam and sleeve
- Heatseal logo to right chest and back neck





ESCAPE ELITE SHORT ES013

XS-5XL // YXS-YXL // 100% POLYESTER DOUBLE WEAVE

- Available in 6", 8" and 10" length
- Wicking and quick drying
- Side pockets - no zips
- Contrast stitching detail to side and rear
- Adjustable drawcord to waist
- Embroidered logo to lower right leg



ESCAPE ELITE SHORT WITH ZIP POCKETS ES015

XS-5XL // YXS-YXL // 100% POLYESTER DOUBLE WEAVE

- Available in 6", 8" and 10" length
- Wicking and quick drying
- Side pockets with zips
- Contrast stitching detail to side and rear
- Adjustable drawcord to waist
- Embroidered logo to lower right leg



ESCAPE ELITE SWIM SHORT S005S

XS-5XL // YXS-YXL // 100% POLYESTER DOUBLE WEAVE

- Available in 6", 8" and 10" length
- Wicking and quick drying
- Inner mesh lining
- Contrast stitching detail to side and rear
- Adjustable drawcord to waist
- Embroidered logo to lower right leg



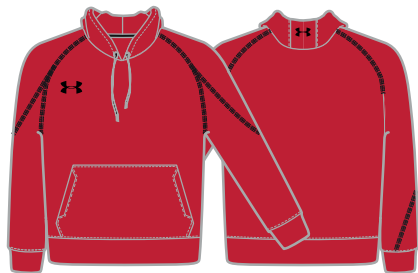
ESCAPE CONTRAST PANEL SHORT ES030

SIZE 8-20 // YXS-YXL // 100% POLYESTER

- Available in 6", 8" and 10" length
- Wicking and quick drying
- Side pockets
- Contrast stitching and panel detail at back yoke
- Adjustable drawcord to waist
- Embroidered logo to lower right leg



VAULT RANGE



VAULT STORM HOODY VA016

XS-5XL // YXS-YXL // 75% COTTON, 25% POLYESTER

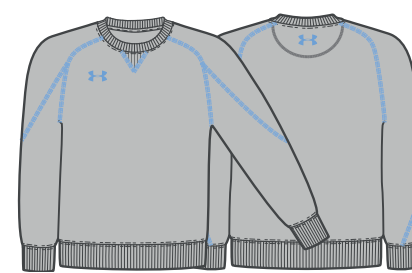
- Soft, mid-weight fleece for warmth and comfort
- Technical water-resistant finish for all-weather protection
- Adjustable drawcord, double pocket to front
- Three panel hood for comfort
- Contrast stitch detail to shoulder
- Embroidered logo to right chest



VAULT STORM FULL ZIP HOODY VA017

XS-5XL // YXS-YXL // 75% COTTON, 25% POLYESTER

- Soft, mid-weight fleece for warmth and comfort
- Technical water-resistant finish for all-weather protection
- Adjustable drawcord with full length zip to front
- Three panel hood for comfort
- Contrast stitch detail to shoulder
- Embroidered logo to right chest



VAULT STORM CREW SWEAT VA030

XS-5XL // YXS-YXL // 75% COTTON, 25% POLYESTER

- Soft, mid-weight fleece for warmth and comfort
- Technical water resistant finish for all-weather protection
- Crew neck alternative to hoody
- Contrast stitch detail to shoulder
- Embroidered logo to upper sleeves
- Space for initials to right chest, club crest/logo to left chest

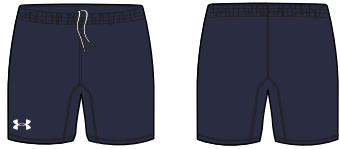


VAULT 1/4 ZIP FLEECE VA007

XS-5XL // 100% POLYESTER

- Advanced high-loft fleece for maximum warmth and comfort
- Microbrushed face provides soft hand & modern aesthetic
- 1/4 zip construction for on demand ventilation
- Contrast stitching to shoulder
- Concealed zip with zip garage
- Embroidered logo on right chest and back neck





FLEECE LEISURE SHORT M034

XS-5XL // YXS-YXL // 75% COTTON 25% POLYESTER

- Available in 10" length
- Soft Fleece Fabric
- Elasticated waistband and drawcord
- Embroidered logo to lower right leg



FOOTBALL 3/4 TRAINING PANT ES028

XS-5XL // YXS-YXL // 100% POLYESTER

- Soft and lightweight for extra comfort and mobility
- Superior moisture transport keeps you dry and comfortable
- Mesh lining for breathability with mesh panels to back of legs
- Side pockets with zips
- Contrast panels to side and shoulder
- Embroidered logo to right chest and back neck



STORM SWEAT PANT VA022

XS-5XL // YXS-YXL // 75% COTTON, 25% POLYESTER

- Superior moisture transport keeps you dry and comfortable
- Water resistant finish to help keep you dry
- Mesh lining for breathability, with open vent to back
- Side seam pockets - no zips
- Adjustable drawcord to waist
- Embroidered logo to upper right leg



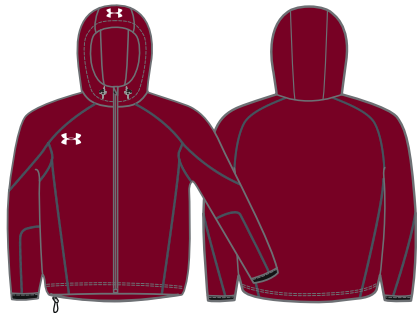
SYNCRO TRAINING PANEL TEE SY001

XS-5XL // YXS-YXL // 100% POLYESTER

- New cut and sew design with stretch mesh panelling
- Wicking and quick drying to keep you cool & comfortable
- Regular fit allowing free movement
- Contrast flatlock stitching detail
- Heatseal logo on right chest



TRAINING RANGE



FULL ZIP CONTACT TRAINING TOP M037

XS-5XL // YXS-YXL // 93% POLYESTER, 7% SPANDEX

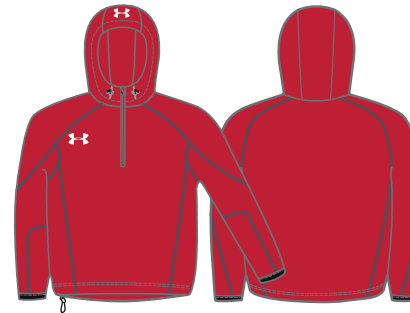
- Superior moisture transport keeps you dry and comfortable
- Mesh lining for breathability
- Two pockets to front with zips
- Adjustable hood, hem and cuff, vent to back
- Contrast stitch detail to shoulder
- Embroidered logo to right chest



CONTACT TRAINING TOP M039

XS-5XL // YXS-YXL // 93% POLYESTER, 7% SPANDEX

- Wind and water resistant to protect you in all conditions
- Durable yet comfortable woven fabrication
- Volume adjuster to hem and elastic binding on cuff
- Mesh lining to keep you cool and comfortable
- Contrast stitch detail to shoulder
- Embroidered logo to right chest



HOODED 1/4 ZIP CONTACT TOP M035

XS-5XL // YXS-YXL // 93% POLYESTER, 7% SPANDEX

- Wind and water resistant to protect you in all conditions
- Durable yet comfortable woven fabrication
- Volume adjuster to hem and elastic binding on cuff
- Mesh lining to keep you cool and comfortable
- Contrast stitch detail to shoulder
- Embroidered logo to right chest



Available in Full Zip M038

1/4 ZIP CONTACT TOP M036

XS-5XL // YXS-YXL // 93% POLYESTER, 7% SPANDEX

- Wind and water resistant to protect you in all conditions
- Durable yet comfortable woven fabrication
- Volume adjuster to hem and elastic binding on cuff
- Mesh lining to keep you cool and comfortable
- Contrast stitch detail to shoulder
- Embroidered logo to right chest



BESPOKE TRAINING

M MEN'S SIZING

	XS	SM	MD	LG	XL	2XL	3XL	4XL	5XL
Chest	38 in	40 in	42 in	44 in	46 in	48 in	50 in	52 in	54 in
Waist	30 in	32 in	34 in	36 in	38 in	40 in	42 in	44 in	46 in

W WOMEN'S SIZING

Size	8	10	12	14	16	18	20
Chest	32 in	34 in	36 in	38 in	40 in	42 in	44 in
Waist	25 in	27 in	29 in	31 in	33 in	35 in	37 in

Y YOUTH SIZING

	CHILD	JUNIOR	YXS	YSM	YMD	YLG	YXL
Chest	23 in	25 in	27 in	29 in	31 in	33 in	35-36 in
Waist	16 in	18 in	20 in	22 in	24 in	26 in	28 in

COLOURS

BESPOKE TRAINING

Garments from the Legend, Premier, Escape and Motivate off field ranges are available in the colours shown below:

- BLACK
- WHITE
- RED
- NAVY
- SKY
- ROYAL
- FOREST GREEN
- EMERALD
- MAROON
- GOLD
- PURPLE

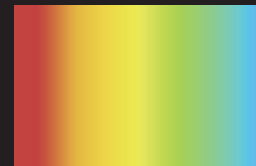
Please Note:

Some garments are not available in all colours shown above. See individual garment information for colour availability.

CONTRAST STITCH & PIPING

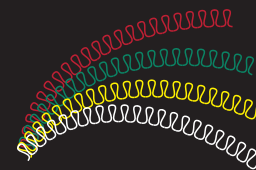
CHARGE PIPING

The Charge range includes contrast piping, which can use a broader colour scheme than the standard cut and sew colours. These can be chosen from the Pantone colour library. For more information, please contact us.



VAULT CONTRAST STITCH

The Vault range includes a contrast stitch which can use a broader colour scheme than the standard cut and sew colours. We can use almost any colour for the contrast stitching, so we can match you off field garments with your team colours.



FIT OPTIONS

UNDER ARMOUR REGULAR FIT

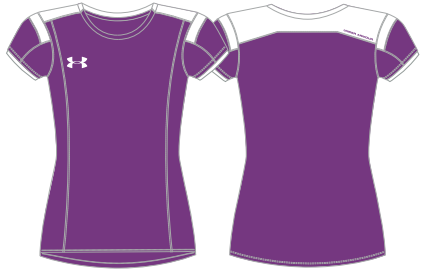
All our bespoke off field garments are designed with a regular fit, eliminating the bulk of extra fabric whilst improving your range of motion. The looser fit allows you to focus on your performance, whilst your kit will deliver the solid performance you'd expect from Under Armour.

WOMEN'S BESPOKE TRAINING +



SLOANE
STEPHENS

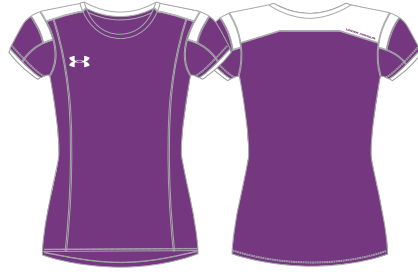
I WILL.



FLOW TECH™ TEE WFL011

SIZE 8-20 // YXS-YXL // 100% POLYESTER

- The newly upgraded essential Under Armour tee
- Lightweight brushed poly fabrication with soft, comfortable hand - with wicking Armourblock technology
- Superior moisture transport and enhanced dry times
- Contrast panels to shoulder and back
- Heatseal logo on right chest and back neck



FLOW CHARGED COTTON TEE WFL010

SIZE 8-20 // YXS-YXL // 95% COTTON, 5% ELASTANE

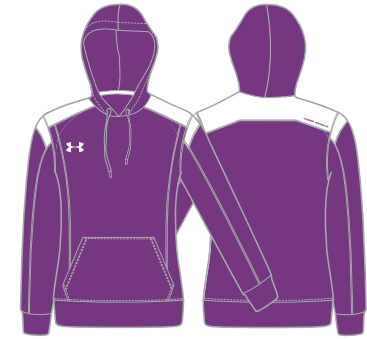
- Charged with moisture wicking, quick dry technology
- Dries faster than ordinary cotton - with Armourblock
- Soft, comfortable pima cotton fabrication
- Built with 4-way stretch for superior comfort and mobility
- Contrast panels to shoulder and back
- Embroidered logo on right chest and back neck



FLOW PERFORMANCE POLO WFL012

SIZE 8-20 // YXS-YXL // 95% POLYESTER, 5% ELASTANE

- Lightweight Heatgear fabric keeps you cool and dry
- Anti-pick and anti-pill finish for long lasting durability
- UPF 30+ protects against harmful sun rays
- Contrast panels to shoulder and back
- 3 buttons to collar
- Embroidered logo on right chest and back neck



FLOW ARMOUR FLEECE HOODY WFL013

SIZE 8-20 // YXS-YXL // 100% POLYESTER

- Feels like a cotton sweatshirt, performs like Under Armour
- Hard-faced fleece traps heat for warmth
- Superior moisture transport keeps you dry & comfortable
- Contrast panels to shoulder and back
- Double pocket to front
- Embroidered logo on right chest and lower right back



FLOW RANGE



FLOW TRACK JACKET WFL016

SIZE 8-20 // YXS-YXL // 100% POLYESTER

- Soft and lightweight for extra comfort and mobility
- Superior moisture transport keeps you dry and comfortable
- Mesh lining for breathability, with open vent to back
- Side pockets with zips
- Contrast panels to shoulder and back
- Embroidered logo to right chest and back neck



FLOW TRACKPANT WFL017

SIZE 8-20 // YXS-YXL // 100% POLYESTER

- Soft and lightweight for extra comfort and mobility
- Superior moisture transport keeps you dry and comfortable
- Mesh lining for breathability
- Side pockets - no zips, drawcord to waist, concealed zip
- Contrast side panels to upper leg
- Embroidered logo to upper left leg



FLOW LS 1/4 ZIP TECH TEE WFL029

XS-5XL // YXS-YXL // 100% POLYESTER

- Soft and lightweight for extra comfort and mobility
- Superior moisture transport keeps you dry and comfortable
- Mesh lining for breathability, with open vent to back
- Side pockets with zips
- Contrast panels to shoulder and back
- Heatseal logo to right chest and back neck



FLOW LS FULL ZIP HOODED TECH TEE WFL028

XS-5XL // YXS-YXL // 100% POLYESTER

- Soft and lightweight for extra comfort and mobility
- Superior moisture transport keeps you dry and comfortable
- Mesh lining for breathability, with open vent to back
- Side pockets with zips
- Contrast panels to shoulder and back
- Heatseal logo to right chest and back neck





ADVANCE TECH™ TEE WAD011

SIZE 8-20 // YXS-YXL // 100% POLYESTER

- The newly upgraded essential Under Armour tee
- Lightweight brushed poly fabrication with soft, comfortable hand - with wicking Armourblock technology
- Superior moisture transport and enhanced dry times
- Contrast panels to chest and under arm
- Heatseal logo on right chest and back neck



ADVANCE CHARGED COTTON TEE WAD010

SIZE 8-20 // YXS-YXL // 95% COTTON, 5% ELASTANE

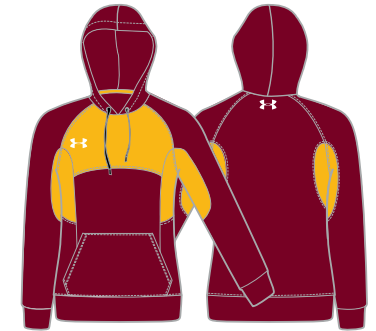
- Charged with moisture wicking, quick dry technology
- Dries faster than ordinary cotton - with Armourblock
- Soft, comfortable pima cotton fabrication
- Built with 4-way stretch for superior comfort and mobility
- Contrast panels to chest and under arm
- Embroidered logo on right chest and back neck



ADVANCE PERFORMANCE POLO WAD012

SIZE 8-20 // YXS-YXL // 95% POLYESTER, 5% ELASTANE

- Lightweight Heatgear fabric keeps you cool and dry
- Anti-pick and anti-pill finish for long lasting durability
- UPF 30+ protects against harmful sun rays
- Contrast panels to chest and under arm
- 3 buttons to collar
- Embroidered logo on right chest and back neck



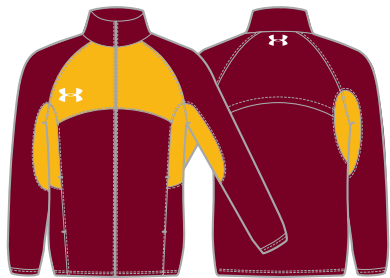
ADVANCE ARMOUR FLEECE HOODY WAD013

SIZE 8-20 // YXS-YXL // 100% POLYESTER

- Feels like a cotton sweatshirt, performs like Under Armour
- Hard-faced fleece traps heat for warmth
- Superior moisture transport keeps you dry & comfortable
- Contrast panels to chest and under arm
- Double pocket to front
- Embroidered logo on right chest and lower right back



ADVANCE RANGE



ADVANCE TRACK JACKET WAD016

SIZE 8-20 // YXS-YXL // 100% POLYESTER

- Soft and lightweight for extra comfort and mobility
- Superior moisture transport keeps you dry and comfortable
- Mesh lining for breathability, with open vent to back
- Side pockets with zips
- Contrast panels to chest and under arm
- Embroidered logo to right chest and back neck



ADVANCE TRACKPANT WAD017

SIZE 8-20 // YXS-YXL // 100% POLYESTER

- Soft and lightweight for extra comfort and mobility
- Superior moisture transport keeps you dry and comfortable
- Mesh lining for breathability
- Side pockets - no zips, drawcord to waist, concealed zip
- Contrast side panels to upper leg
- Embroidered logo to upper left leg



ADVANCE LS 1/4 ZIP TECH TEE WAD029

XS-5XL // YXS-YXL // 100% POLYESTER

- Soft and lightweight for extra comfort and mobility
- Superior moisture transport keeps you dry and comfortable
- Mesh lining for breathability, with open vent to back
- Side pockets with zips
- Contrast panels to shoulder and back
- Heatseal logo to right chest and back neck



ADVANCE LS FULL ZIP HOODED TECH TEE WAD028

XS-5XL // YXS-YXL // 100% POLYESTER

- Soft and lightweight for extra comfort and mobility
- Superior moisture transport keeps you dry and comfortable
- Mesh lining for breathability, with open vent to back
- Side pockets with zips
- Contrast panels to shoulder and back
- Heatseal logo to right chest and back neck





CHARGE TECH™ TEE WCH011

SIZE 8-20 // YXS-YXL // 100% POLYESTER

- The newly upgraded essential Under Armour tee
- Lightweight brushed poly fabrication with soft, comfortable hand - with wicking Armourblock technology
- Superior moisture transport and enhanced dry times
- Contrast panels to chest and under arm
- Heatseal logo on right chest and back neck



CHARGE CHARGED COTTON TEE WCH010

SIZE 8-20 // YXS-YXL // 95% COTTON, 5% ELASTANE

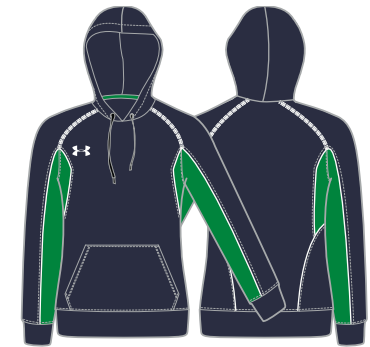
- Charged with moisture wicking, quick dry technology
- Dries faster than ordinary cotton - with Armourblock
- Soft, comfortable pima cotton fabrication
- Built with 4-way stretch for superior comfort and mobility
- Contrast panels to chest and under arm
- Embroidered logo on right chest and back neck



CHARGE PERFORMANCE POLO WCH012

SIZE 8-20 // YXS-YXL // 95% POLYESTER, 5% ELASTANE

- Lightweight Heatgear fabric keeps you cool and dry
- Anti-pick and anti-pill finish for long lasting durability
- UPF 30+ protects against harmful sun rays
- Contrast panels to chest and under arm
- 3 buttons to collar
- Embroidered logo on right chest and back neck



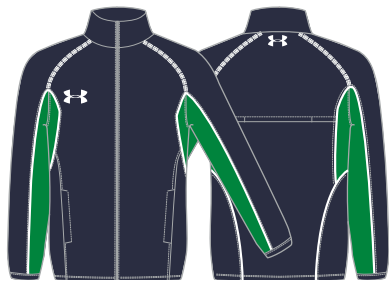
CHARGE ARMOUR FLEECE HOODY WCH013

SIZE 8-20 // YXS-YXL // 100% POLYESTER

- Feels like a cotton sweatshirt, performs like Under Armour
- Hard-faced fleece traps heat for warmth
- Superior moisture transport keeps you dry & comfortable
- Contrast panels to chest and under arm
- Double pocket to front
- Embroidered logo on right chest and lower right back



CHARGE RANGE



CHARGE TRACK JACKET WCH016

SIZE 8-20 // YXS-YXL // 100% POLYESTER

- Soft and lightweight for extra comfort and mobility
- Superior moisture transport keeps you dry and comfortable
- Mesh lining for breathability, with open vent to back
- Side pockets with zips
- Contrast panels to chest and under arm
- Embroidered logo to right chest and back neck



CHARGE TRACKPANT WCH017

SIZE 8-20 // YXS-YXL // 100% POLYESTER

- Soft and lightweight for extra comfort and mobility
- Superior moisture transport keeps you dry and comfortable
- Mesh lining for breathability
- Side pockets - no zips, drawcord to waist, concealed zip
- Contrast side panels to upper leg
- Embroidered logo to upper left leg



CHARGE LS 1/4 ZIP TECH TEE WCH029

XS-5XL // YXS-YXL // 100% POLYESTER

- Soft and lightweight for extra comfort and mobility
- Superior moisture transport keeps you dry and comfortable
- Mesh lining for breathability, with open vent to back
- Side pockets with zips
- Contrast panels to shoulder and back
- Heatseal logo to right chest and back neck



CHARGE LS FULL ZIP HOODED TECH TEE WCH028

XS-5XL // YXS-YXL // 100% POLYESTER

- Soft and lightweight for extra comfort and mobility
- Superior moisture transport keeps you dry and comfortable
- Mesh lining for breathability, with open vent to back
- Side pockets with zips
- Contrast panels to shoulder and back
- Heatseal logo to right chest and back neck





VAULT TECH™ TEE WVA011

SIZE 8-20 // YXS-YXL // 100% POLYESTER

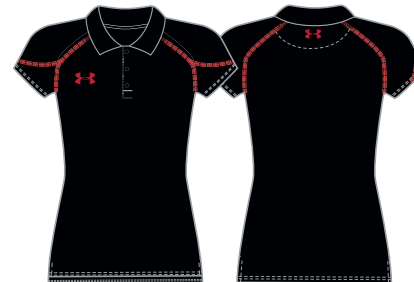
- The newly upgraded essential Under Armour tee
- Lightweight brushed poly fabrication with soft, comfortable hand - with wicking Armourblock technology
- Superior moisture transport and enhanced dry times
- Contrast stitch to arm seam and sleeve
- Heatseal logo on right chest and back neck



VAULT CHARGED COTTON TEE WVA010

SIZE 8-20 // YXS-YXL // 95% COTTON, 5% ELASTANE

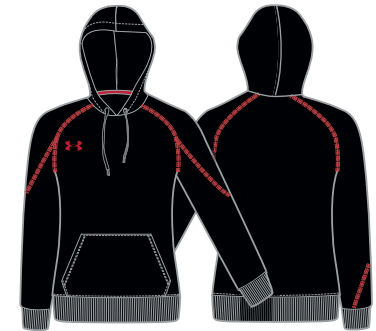
- Charged with moisture wicking, quick dry technology
- Dries faster than ordinary cotton - with Armourblock
- Soft, comfortable pima cotton fabrication
- Built with 4-way stretch for superior comfort and mobility
- Contrast stitch to arm seam and sleeve
- Embroidered logo on right chest and back neck



VAULT PERFORMANCE POLO WVA012

SIZE 8-20 // YXS-YXL // 95% POLYESTER, 5% ELASTANE

- Lightweight Heatgear fabric keeps you cool and dry
- Anti-pick and anti-pill finish for long lasting durability
- UPF 30+ protects against harmful sun rays
- Contrast stitch to arm seam and sleeve
- 3 buttons to collar
- Embroidered logo on right chest and back neck



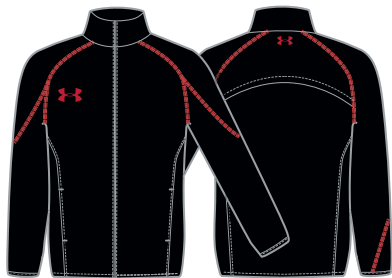
VAULT ARMOUR FLEECE HOODY WVA013

SIZE 8-20 // YXS-YXL // 100% POLYESTER

- Feels like a cotton sweatshirt, performs like Under Armour
- Hard-faced fleece traps heat for warmth
- Superior moisture transport keeps you dry & comfortable
- Contrast stitch to arm seam and sleeve
- Double pocket to front
- Embroidered logo on right chest and lower right back



VAULT RANGE



VAULT TRACK JACKET WVA016

SIZE 8-20 // YXS-YXL // 100% POLYESTER

- Soft and lightweight for extra comfort and mobility
- Superior moisture transport keeps you dry and comfortable
- Mesh lining for breathability, with open vent to back
- Side pockets with zips
- Contrast stitch to arm seam and sleeve
- Embroidered logo to right chest and back neck



VAULT TRACKPANT WVA017

SIZE 8-20 // YXS-YXL // 100% POLYESTER

- Soft and lightweight for extra comfort and mobility
- Superior moisture transport keeps you dry and comfortable
- Mesh lining for breathability
- Side pockets - no zips, drawcord to waist, concealed zip
- Contrast stitch to back
- Embroidered logo to upper left leg



VAULT LS 1/4 ZIP TECH TEE WVA028

XS-5XL // YXS-YXL // 100% POLYESTER

- Soft and lightweight for extra comfort and mobility
- Superior moisture transport keeps you dry and comfortable
- Mesh lining for breathability, with open vent to back
- Side pockets with zips
- Contrast stitch to arm seam and sleeve
- Heatseal logo to right chest and back neck

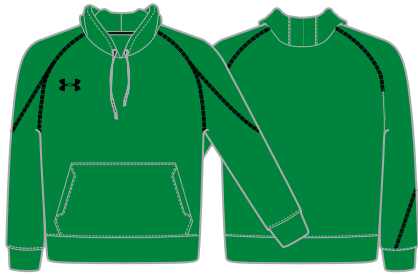


VAULT LS FULL ZIP HOODED TECH TEE WVA029

XS-5XL // YXS-YXL // 100% POLYESTER

- Soft and lightweight for extra comfort and mobility
- Superior moisture transport keeps you dry and comfortable
- Mesh lining for breathability, with open vent to back
- Side pockets with zips
- Contrast stitch to arm seam and sleeve
- Heatseal logo to right chest and back neck





VAULT STORM HOODY WVA021

SIZE 8-20 // YXS-YXL // 75% COTTON, 25% POLYESTER

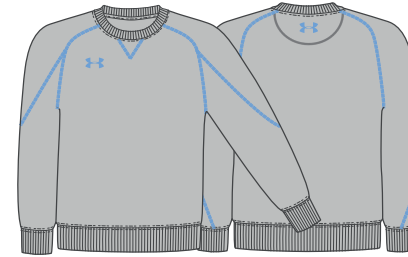
- Soft, mid-weight fleece for warmth and comfort
- Technical water-resistant finish for all-weather protection
- Adjustable drawcord, double pocket to front
- Three panel hood for comfort
- Contrast stitch detail to shoulder
- Embroidered logo to right chest



VAULT STORM FULL ZIP HOODY WES022

SIZE 8-20 // YXS-YXL // 75% COTTON, 25% POLYESTER

- Soft, mid-weight fleece for warmth and comfort
- Technical water-resistant finish for all-weather protection
- Adjustable drawcord with full length zip to front
- Three panel hood for comfort
- Contrast stitch detail to shoulder
- Embroidered logo to right chest



VAULT STORM CREW SWEAT WVA030

SIZE 8-20 // YXS-YXL // 75% COTTON, 25% POLYESTER

- Soft, mid-weight fleece for warmth and comfort
- Technical water resistant finish for all-weather protection
- Crew neck alternative to hoody
- Contrast stitch detail to shoulder
- Space for initials to right chest
- Embroidered logo to right chest



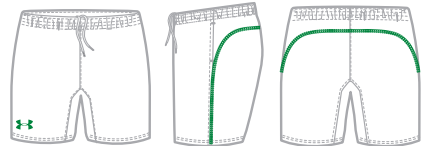
VAULT 1/4 ZIP FLEECE WVA015

SIZE 8-20 // 100% POLYESTER

- Advanced high-loft fleece for maximum warmth and comfort
- Microbrushed face provides soft hand & modern aesthetic
- 1/4 zip construction for on demand ventilation
- Contrast stitching to shoulder
- Concealed zip with zip garage
- Embroidered logo on right chest and back neck



VAULT RANGE



ESCAPE ELITE SHORT WES020

SIZE 8-20 // YXS-YXL // 100% POLYESTER DOUBLE WEAVE

- Available in 6", 8" and 10" length
- Wicking and quick drying
- Side pockets - no zips
- Contrast stitching detail to side and rear
- Adjustable drawcord to waist
- Embroidered logo to lower right leg



ESCAPE ELITE SHORT WITH ZIP POCKETS WES032

SIZE 8-20 // YXS-YXL // 100% POLYESTER DOUBLE WEAVE

- Available in 6", 8" and 10" length
- Wicking and quick drying
- Side pockets with zips
- Contrast stitching detail to side and rear
- Embroidered logo to lower right leg



ESCAPE CONTRAST PANEL SHORT WES034

SIZE 8-20 // YXS-YXL // 100% POLYESTER

- Available in 6", 8" and 10" length
- Wicking and quick drying
- Side pockets
- Contrast stitching detail to side and rear
- Embroidered logo to lower right leg

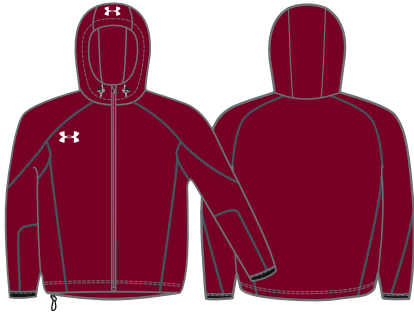


ESCAPE FITTED SHORT WES035

SIZE 8-20 // YXS-YXL // 100% POLYESTER

- Available in 6", 8" and 10" length
- Wicking and quick drying
- Side pockets
- Contrast stitching detail to side and rear
- Embroidered logo to lower right leg





FULL ZIP CONTACT TOP WM035

SIZE 8-20 // YXS-YXL // 93% POLYESTER, 7% SPANDEX

- Superior moisture transport keeps you dry and comfortable
- Mesh lining for breathability
- Two pockets to front with zips
- Adjustable hood, hem and cuff, vent to back
- Contrast stitch detail to shoulder
- Embroidered logo to right chest



CONTACT TOP WM038

SIZE 8-20 // YXS-YXL // 93% POLYESTER, 7% SPANDEX

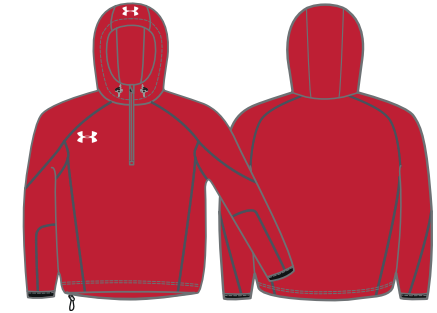
- Wind and water resistant to protect you in all conditions
- Durable yet comfortable woven fabrication
- Volume adjuster to hem and elastic binding on cuff
- Mesh lining to keep you cool and comfortable
- Contrast stitch detail to shoulder
- Embroidered logo to right chest



1/4 ZIP CONTACT TOP WMO36

XS-5XL // YXS-YXL // 93% POLYESTER, 7% SPANDEX

- Wind and water resistant to protect you in all conditions
- Durable yet comfortable woven fabrication
- Volume adjuster to hem and elastic binding on cuff
- Mesh lining to keep you cool and comfortable
- Contrast stitch detail to shoulder
- Embroidered logo to right chest



HOODED 1/4 ZIP CONTACT TOP WMO32

XS-5XL // YXS-YXL // 93% POLYESTER, 7% SPANDEX

- Wind and water resistant to protect you in all conditions
- Durable yet comfortable woven fabrication
- Volume adjuster to hem and elastic binding on cuff
- Mesh lining to keep you cool and comfortable
- Contrast stitch detail to shoulder
- Embroidered logo to right chest



TRAINING RANGE



STORM SWEAT PANT WVA027

SIZE 8-20 // YXS-YXL // 75% COTTON, 25% POLYESTER

- Superior moisture transport keeps you dry and comfortable
- Water resistant finish to help keep you dry
- Mesh lining for breathability, with open vent to back
- Side seam pockets - no zips
- Adjustable drawcord to waist
- Embroidered logo to upper right leg



SYNCRO TRAINING PANEL TEE WSY001

XS-5XL // YXS-YXL // 100% POLYESTER

- New cut and sew design with stretch mesh panelling
- Wicking and quick drying to keep you cool and comfortable
- Regular fit allowing free movement
- Contrast flatlock stitching detail
- Heatseal logo on right chest



STOCK RANGE +



I WILL™

STOCK PRODUCT SIZING

M MEN'S SIZE CHART

	XS	SM	MD	LG	XL	2XL	3XL	4XL	5XL
Chest	38 in	40 in	42 in	44 in	46 in	48 in	50 in	52 in	54 in
Waist	30 in	32 in	34 in	36 in	38 in	40 in	42 in	44 in	46 in

W WOMEN'S SIZE CHART

	XS	S	M	L	XL	2XL	3XL
Size	8	10	12	14	16	18	20
Chest	32 in	34 in	36 in	38 in	40 in	42 in	44 in
Waist	25 in	27 in	29 in	31 in	33 in	35 in	37 in

Y YOUTH SIZE CHART

	CHILD	JUNIOR	YXS	YSM	YMD	YLG	YXL
Chest	23 in	25 in	27 in	29 in	31 in	33 in	35-36 in
Waist	16 in	18 in	20 in	22 in	24 in	26 in	28 in

COLOURS

STOCK COLOURS

Under Armour stock products are available in black, navy and white, dependant on garment style. See product information for exact colours.

- BLACK
- WHITE
- NAVY

Please Note:

Some garments are not available in all colours shown above. See individual garment information for colour availability.

UNDER ARMOUR STOCK & TRAINING PRODUCT

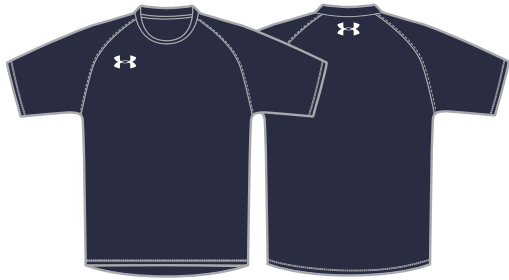
UA stock products are our core styles for off field leisure wear, available for dispatch within 24 hours on confirmation of your order.

Our stock offers the same high quality and performance that you'd expect from Under Armour, without the lead times of their bespoke alternatives.

FIT OPTIONS

UNDER ARMOUR REGULAR FIT

All our stock garments are designed with a regular fit, eliminating the bulk of extra fabric whilst improving your range of motion. The looser fit allows you to focus on your performance, whilst your kit will deliver the solid performance you'd expect from Under Armour.



UA TECH™ T-SHIRT S001

XS-3XL // SIZE 8-20 // 100% POLYESTER

- The essential Under Armour tee
- Superior moisture transport keeps you dry and comfortable
- Lightweight brushed poly fabrication with soft, comfortable hand - with wicking Armourblock technology
- Heatseal logo to right chest and back neck



PERFORMANCE POLO S002

XS-3XL // SIZE 8-20 // 95% POLYESTER, 5% ELASTANE

- Lightweight Heatgear fabric keeps you cool and dry
- Anti-pick and anti-pill finish for long lasting durability
- UPF 30+ protects against harmful sun rays
- 3 buttons on collar
- Embroidered logo to right chest and back neck



1/4 ZIP FLEECE S009

XS-3XL // SIZE 8-20 // 100% POLYESTER

- Advanced high-loft fleece for maximum warmth & comfort
- Microbrushed face provides soft hand & modern aesthetic
- 1/4 zip construction for on demand ventilation
- Contrast stitch to shoulder, concealed zip with garage
- Embroidered logo to right chest and back neck



CONTRAST STITCH



FULL ZIP TRACKPANT S004

FULL ZIP

XS-3XL // SIZE 8-20 // 100% POLYESTER

- Soft and lightweight for extra comfort and mobility
- Mesh lining for breathability
- Side pockets - no zips, with adjustable drawcord to waist
- Concealed zip to side of leg
- Embroidered logo to upper right leg



STOCK RANGE



HOODED SWEAT S003

XS-3XL // SIZE 8-20 // 100% POLYESTER

- Feels like a cotton sweatshirt, performs like Under Armour
- Superior moisture transport keeps you dry and comfortable
- Hard faced fleece traps heat for warmth
- Double pocket to front, adjustable drawcord to hood
- Embroidered logo to right chest



ELITE SHORT S005

XS-3XL // YXS-YXL // 100% POLYESTER DOUBLE WEAVE

- Wicking and quick drying to keep you cool & comfortable
- Side pockets - no zips
- Adjustable drawcord to waist
- Embroidered logo to lower right leg



CONTACT JACKET S006

XS-3XL // SIZE 8-20 // 93% POLYESTER, 7% SPANDEX

- Wind and water resistant to protect you in all conditions
- Durable, yet comfortable woven fabrication
- Volume adjuster to hem and elastic binding on cuff
- Mesh lining to keep you cool and comfortable
- Embroidered logo to right chest and back neck



STOCK GILET S010

XS-3XL // SIZE 8-20 // 100% NYLON

- Insulated for extra comfort and mobility
- Superior moisture transport keeps you dry and comfortable
- DWR finish to help keep you dry
- Two pockets to front
- Embroidered logo to right chest and back neck

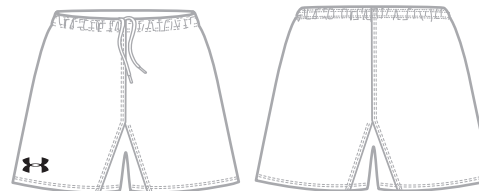




STOCK RUGBY JERSEY SR025

XS-3XL // YXS-YXL // 96% POLYESTER, 4% SPANDEX

- Three colour options
- Wicking and quick drying to keep you cool and comfortable
- Short sleeve only
- Disrupt regular fit only available
- Embroidered logo to right chest



ACADEMY RUGBY SHORT SRS020

XS-3XL // YXS-YXL // 100% POLYESTER

- Superior moisture transport system & enhanced dry times
- Flat seaming for comfort and mobility
- Silicone gripper to waist to prevent shorts riding
- Adjustable drawcord to waist
- Embroidered logo to lower right leg



ELEMENT JACKET S008

XS-3XL // 100% NYLON

- 1800g/m² synthetic insulation
- Water and wind resistant to protect you from the elements
- Concealed zip with velcro fastenings, concealed hood
- Large outer pockets to front, plus inner pocket
- Embroidered logo to right chest and back neck



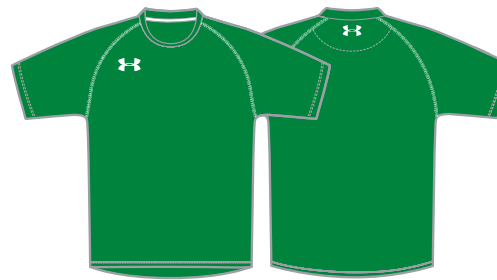
STOCK RANGE



SIDELINE JACKET S007

XS-3XL // 100% NYLON

- Wind and water resistant to keep you warm and dry
- Superior moisture transport keeps you dry and comfortable
- Concealed zip and button fasteners to front
- Adjustable hood and cuff
- Embroidered logo to right chest, heatseal to centre back



STOCK CHARGED COTTON TEE S011

XS-3XL // 95% COTTON, 5% ELASTANE

- Charged with moisture wicking, quick dry technology
- Dries faster than ordinary cotton - with Armourblock
- Soft, comfortable pima cotton fabrication
- Built with 4-way stretch for superior comfort and mobility
- Contrast stitch to shoulder
- Embroidered logo on right chest and back neck



FOOTBALL TRAINING PANT S014

XS-3XL // SIZE 8-20 // 100% POLYESTER

- Soft and lightweight for extra comfort and mobility
- Back pocket
- Closer fitting pant for increased range of movement
- Embroidered logo to upper right leg





MENS WATERPROOF JACKET S012

XS-5XL // 100% POLYESTER

- Fully taped waterproof to protect you in all conditions
- Durable yet comfortable woven fabrication
- Volume adjuster to hem and elastic binding on cuff
- Mesh lining to keep you cool and comfortable
- Heasteal logo to right chest and back neck



MENS WATERPROOF TROUSER S013

XS-5XL // 100% POLYESTER

- Fully taped waterproof to protect you in all conditions
- Durable yet comfortable woven fabrication
- Volume adjuster to hem and elastic binding on cuff
- Mesh lining to keep you cool and comfortable
- Heasteal logo to right chest and back neck



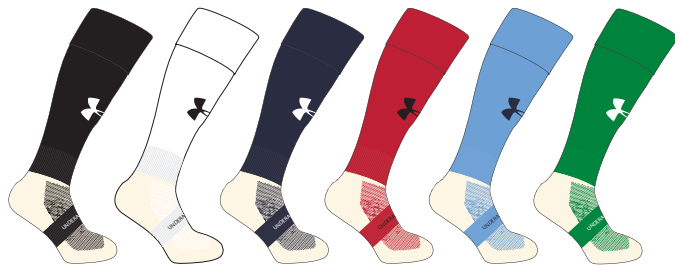
UA TRAINING BIB BIB01

LG & XL // 100% POLYESTER MICRO MESH

- Lightweight fabric
- Reversible design
- Large Under Armour logo to centre chest



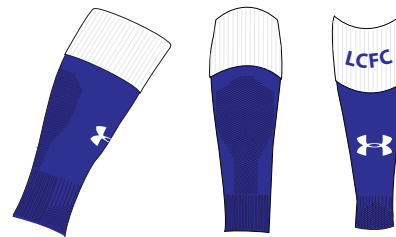
STOCK RANGE



STOCK COOLMAX SOCK TJS001

MD (3-6), LG (7-11), XL (12-14) // LEG: 95% POLYIMIDE, 5% ELASTANE / FOOT: 75% COOLMAX, 25% POLYIMINE

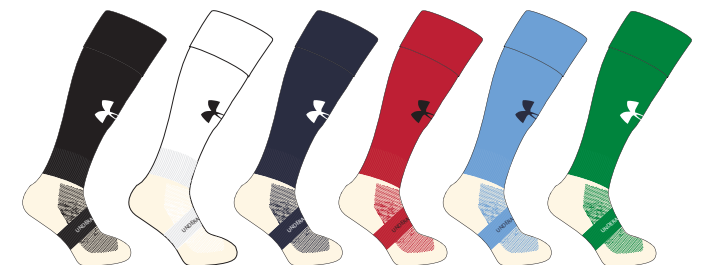
- Keep ahead of the game with the Under Armour stock sock
- Designed and manufactured in the UK, and worn by athletes worldwide
- Superior moisture management and enhanced dry times keep your foot cool & comfortable
- Dependable performance wash after wash
- Under Armour logo to front leg and across foot



BESPOKE SLEEVE SOCK TJS010

MD (3-6), LG (7-11), XL (12-14) // LEG: 95% POLYIMIDE, 5% ELASTANE /

- New sleeve sock design
- Designed and manufactured in the UK, and worn by athletes worldwide
- Superior moisture management and enhanced dry times keep you cool & comfortable
- Dependable performance wash after wash
- Under Armour logo to front leg
- Available in most colours

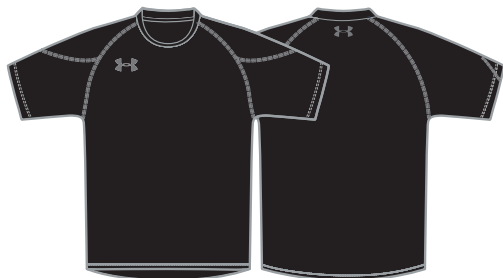


BESPOKE NYLON SOCK TJS011

MD (3-6), LG (7-11), XL (12-14) // LEG: 95% POLYIMIDE, 5% ELASTANE / FOOT: 75% NYLON, 25% POLYIMINE

- Keep ahead of the game with the Under Armour stock sock
- Designed and manufactured in the UK, and worn by athletes worldwide
- Superior moisture management and enhanced dry times keep your foot cool & comfortable
- Dependable performance wash after wash
- Under Armour logo to front leg and across foot



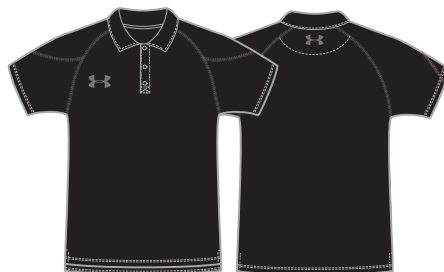


White not available in youth sizes

UA TECH™ T-SHIRT S015

XS-3XL // SIZE 8-20 // 100% POLYESTER

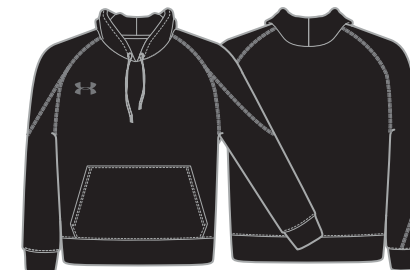
- The essential Under Armour tee
- Superior moisture transport keeps you dry and comfortable
- Lightweight brushed poly fabrication with soft, comfortable hand - with wicking Armourblock technology
- Heatseal logo to right chest and back neck



PERFORMANCE POLO S016

XS-3XL // SIZE 8-20 // 95% POLYESTER, 5% ELASTANE

- Lightweight Heatgear fabric keeps you cool and dry
- Anti-pick and anti-pill finish for long lasting durability
- UPF 30+ protects against harmful sun rays
- 3 buttons to collar
- Embroidered logo to right chest and back neck



HOODED SWEAT S017

XS-3XL // SIZE 8-20 // 100% POLYESTER

- Feels like a cotton sweatshirt, performs like Under Armour
- Superior moisture transport keeps you dry and comfortable
- Hard faced fleece traps heat for warmth
- Double pocket to front, adjustable drawcord to hood
- Embroidered logo to right chest



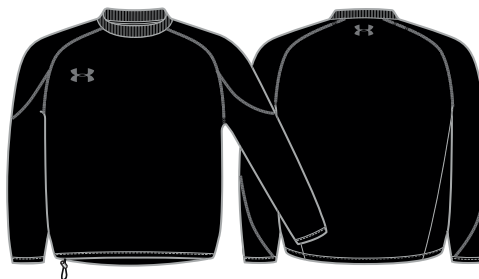
VAULT STOCK RANGE



1/4 ZIP FLEECE S021

XS-3XL // SIZE 8-20 // 100% POLYESTER

- Advanced high-loft fleece for maximum warmth & comfort
- Microbrushed face provides soft hand & modern aesthetic
- 1/4 zip construction for on demand ventilation
- Contrast stitch to shoulder, concealed zip with garage
- Embroidered logo to right chest and back neck



CONTACT JACKET S018

XS-3XL // SIZE 8-20 // 93% POLYESTER, 7% SPANDEX

- Wind and water resistant to protect you in all conditions
- Durable, yet comfortable woven fabrication
- Volume adjuster to hem and elastic binding on cuff
- Mesh lining to keep you cool and comfortable
- Embroidered logo to right chest and back neck



1/4 ZIP LS TECH TEE S022

XS-3XL // SIZE 8-20 // 100% POLYESTER

- The essential Under Armour tee, now with a 1/4 zip
- Superior moisture transport keeps you dry and comfortable
- Lightweight brushed poly fabrication with soft, comfortable hand - with wicking Armourblock technology
- Heatseal logo to right chest and back neck

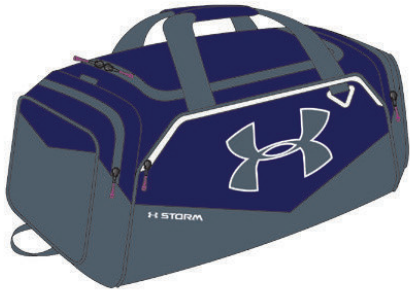




UA UNDENIABLE LARGE DUFFLE

14" X 29" X 12" // CUB. VOL: 5000 // 600D POLYESTER WITH ABRASION RESISTANT PANEL, 100% POLYESTER

- UA Storm treated to protect your gear from the elements
- Extra large front zippered organisation pocket
- Adjustable shoulder strap
- Ultra comfortable grab handle
- 1 large vented, gusseted pocket for laundry or shoes
- 1 large zippered pocket
- 1 mesh pocket



UA UNDENIABLE MEDIUM DUFFLE

13" X 25" X 11" // CUB. VOL: 3700 // 600D POLYESTER WITH ABRASION RESISTANT PANEL, 100% POLYESTER

- UA Storm treated to protect your gear from the elements
- Extra large front zippered organisation pocket
- Adjustable shoulder strap
- Ultra comfortable grab handle
- 1 large vented, gusseted pocket for laundry or shoes
- 1 large zippered pocket
- 1 mesh pocket



UA WHEELED TEAM BAG

AVAILABLE IN LG & XL

- Large main compartment for extra storage
- Support for vertical balance
- Seperate compartment for shoes
- Reinforced, durable materials
- Comfortable carry handles
- The ideal touring bag

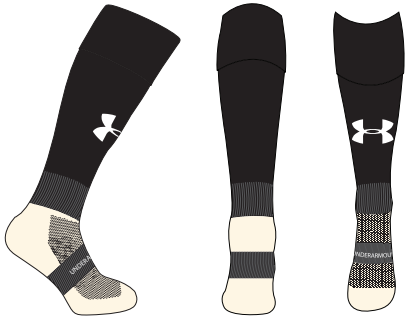


UA HUSTLE BACKPACK

18" X 13" X 8" // CUB. VOL: 1875 CU. IN. // DWR TREATED POLYESTER

- UA Storm treated to protect your gear from the elements
- Soft, tricot lined laptop sleeve to fit up to 15" laptop
- Front H2O repellent UA Storm valuables pocket
- Heatgear adjustable shoulder straps for breathability
- 2 side water bottle pockets
- Ultra comfortable grab handle
- Large front gusseted laundry pocket





STOCK PLAIN SOCK TJS001

ALL SIZES AVAILABLE // LEG: 95% POLYIMIDE, 5% ELASTANE
// FOOT: 75% COOLMAX, 25% POLYIMINE (NYLON)

- Keep ahead of the game with the UA stock sock
- Designed and manufactured in the UK, worn by athletes worldwide
- Superior moisture management and enhanced dry times keep your foot cool and comfortable
- Dependable performance, wash after wash
- UA logo to front leg and across foot



3 COLOUR HOOPED SOCK TJS002

ALL SIZES AVAILABLE // LEG: 95% POLYIMIDE, 5% ELASTANE
// FOOT: 75% COOLMAX, 25% POLYIMINE (NYLON)

- Keep ahead of the game with the UA hooped sock
- Designed and manufactured in the UK, worn by athletes worldwide
- Superior moisture management and enhanced dry times keep your foot cool and comfortable
- Dependable performance, wash after wash
- UA logo to front leg and across foot



2 COLOUR HOOPED SOCK TJS003

ALL SIZES AVAILABLE // LEG: 95% POLYIMIDE, 5% ELASTANE
// FOOT: 75% COOLMAX, 25% POLYIMINE (NYLON)

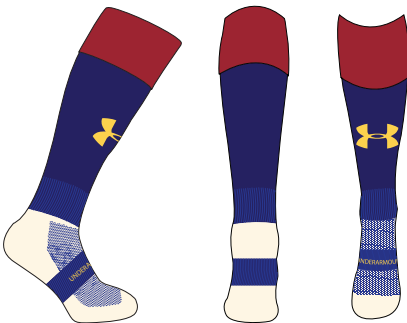
- Keep ahead of the game with the UA hooped sock
- Designed and manufactured in the UK, worn by athletes worldwide
- Superior moisture management and enhanced dry times keep your foot cool and comfortable
- Dependable performance, wash after wash
- UA logo to front leg and across foot



DOUBLE HOOPED SOCK TJS004

ALL SIZES AVAILABLE // LEG: 95% POLYIMIDE, 5% ELASTANE
// FOOT: 75% COOLMAX, 25% POLYIMINE (NYLON)

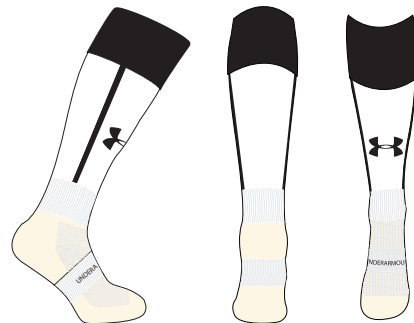
- Keep ahead of the game with the UA hooped sock
- Designed and manufactured in the UK, worn by athletes worldwide
- Superior moisture management and enhanced dry times keep your foot cool and comfortable
- Dependable performance, wash after wash
- UA logo to front leg and across foot



TURNOVER CONTRAST SOCK TJS005

ALL SIZES AVAILABLE // LEG: 95% POLYIMIDE, 5% ELASTANE
// FOOT: 75% COOLMAX, 25% POLYIMINE (NYLON)

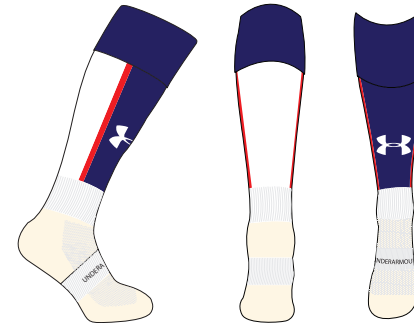
- Keep ahead of the game with the UA turnover sock
- Designed and manufactured in the UK, worn by athletes worldwide
- Superior moisture management and enhanced dry times keep your foot cool and comfortable
- Dependable performance, wash after wash
- UA logo to front leg and across foot



VERTICAL BAR SOCK TJS006

ALL SIZES AVAILABLE // LEG: 95% POLYIMIDE, 5% ELASTANE
// FOOT: 75% COOLMAX, 25% POLYIMINE (NYLON)

- Keep ahead of the game with the UA vertical bar sock
- Designed and manufactured in the UK, worn by athletes worldwide
- Superior moisture management and enhanced dry times keep your foot cool and comfortable
- Dependable performance, wash after wash
- UA logo to front leg and across foot



FRONT PANEL SOCK TJS007

ALL SIZES AVAILABLE // LEG: 95% POLYIMIDE, 5% ELASTANE
// FOOT: 75% COOLMAX, 25% POLYIMINE (NYLON)

- Keep ahead of the game with the UA front panel sock
- Designed and manufactured in the UK, worn by athletes worldwide
- Superior moisture management and enhanced dry times keep your foot cool and comfortable
- Dependable performance, wash after wash
- UA logo to front leg and across foot



PLAIN SOCK TJS008

ALL SIZES AVAILABLE // LEG: 95% POLYIMIDE, 5% ELASTANE
// FOOT: 75% COOLMAX, 25% POLYIMINE (NYLON)

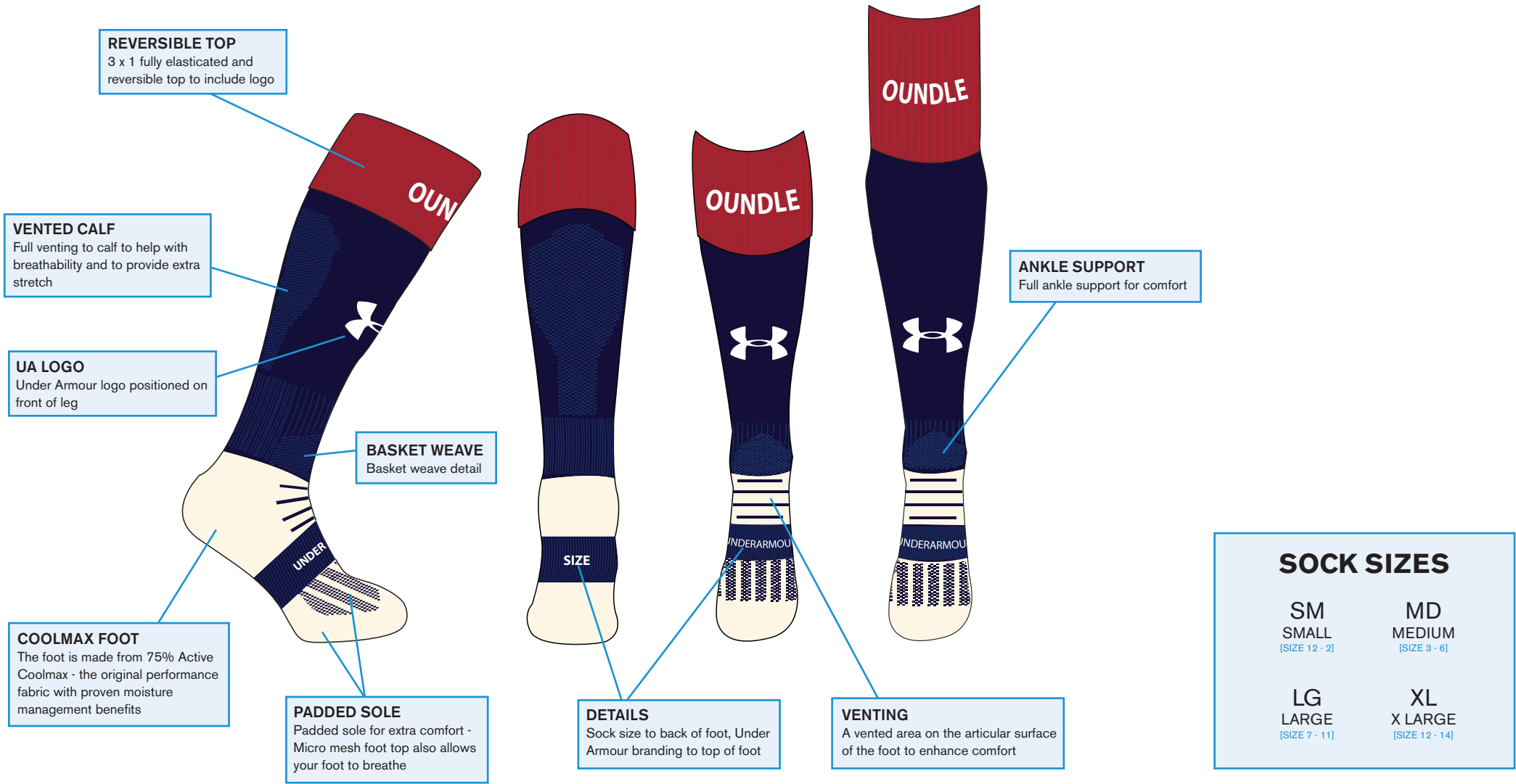
- Keep ahead of the game with the UA plain sock
- Designed and manufactured in the UK, worn by athletes worldwide
- Superior moisture management and enhanced dry times keep your foot cool and comfortable
- Dependable performance, wash after wash
- UA logo to front leg and across foot

COOLMAX

KEEPS YOUR FOOT COOL, DRY & COMFORTABLE.

WHAT IS COOLMAX?

With proven moisture management benefits, Coolmax helps the wearer to remain cool in all situations, ensuring maximum comfort. The Coolmax sock moves moisture away from the foot, resulting in enhanced drying times to keep your foot cool and dry. The performance of the Coolmax sock is a result of the fibre structure, so our socks will continue to perform wash after wash. Our new reversible top sock features updated vents, improved sole padding and improved ankle support to maximise comfort and help improve your performance.



UA BASELAYER +

AVAILABLE TO ORDER FROM UA INLINE STOCK



I WILL.

+ COLDGEAR®

Ideal for days when it's 12°C and below, ColdGear® apparel features a dual-layer fabric that wicks moisture from the skin and circulates body heat – keeping you warm without ever weighing you down.

It all started with our warm weather HeatGear® apparel that wicks sweat to keep you cooler and drier. Athletes demanded the same performance, but for the cold. And Under Armour delivered with ColdGear® apparel. It traps heat whilst it pulls away sweat, all in an ultra lightweight and comfortable garment.



coldgear®

COMPRESSION



1265648 UA COLDGEAR® ARMOUR® COMPRESSION MOCK

SM-2XL // 87% POLYESTER / 13% ELASTANE

- Dual-layer fabric with an ultra-warm, brushed interior & a slick, fast drying exterior
- 4-way stretch fabrication allows greater mobility & maintains shape
- Moisture Transport System wicks sweat away from the body
- Anti-odour technology prevents the growth of odour causing microbes
- Updated, ergonomic mock neck with ARMOUR wordmark on back

BODY/LOGO

001 BLACK/STEEL

100 WHITE/STEEL

410 MIDNIGHT NAVY/STEEL

600 RED STEEL

WOMEN'S AND YOUTH STYLES AVAILABLE ON REQUEST

coldgear®



1265650 EVO COLDGEAR® COMPRESSION CREW

SM-2XL // 87% POLYESTER / 13% ELASTANE

- Signature UA compression fit for top performance
- Updated brushback knit fabrication traps heat for enhanced warmth
- Flatlock seams and raglan sleeve construction for increased comfort and mobility
- Silicone gripper at the hem to keep your shirt from riding up and letting cold air in
- New updated locker tag
- Superior moisture transport keeps you dry and comfortable

BODY/LOGO

- 001 BLACK/WHITE
- 100 WHITE/BLACK
- 410 MIDNIGHT NAVY/WHITE
- 600 RED/WHITE

coldgear®



1265649 EVO COLDGEAR® ARMOUR® COMPRESSION LEGGING

SM-2XL // 87% POLYESTER / 13% ELASTANE

- Dual-layer fabric with an ultra-warm, brushed interior & a slick, fast drying exterior
 - Stretch-mesh panels provide strategic ventilation
 - 4-way stretch fabrication allows greater mobility and maintains shape
 - Moisture Transport System wicks sweat away from the body
 - Anti-odour technology prevents the growth of odour causing microbes
 - Performance elastic waistband
- Inseam: Size LG 26.5" (+/-0.5" per size)

BODY/LOGO

- 001 BLACK/STEEL



UA CHARGED COMPRESSION LS TOP & LEGGING

SM-2XL // 59% NYLON / 41% ELASTANE

- Strategic compression promotes muscle tissue repair, leading to shorter recover times & reduced soreness
- 4 way stretch fabrication allows greater mobility in any direction
- Moisture transport system wicks sweat and dries fast
- Anti-odour technology prevents the growth of odour causing microbes
- Smooth flatlock seam construction

BODY/LOGO

- 040 GRAPHITE/BLACK/ORANGE

WOMEN'S AND YOUTH STYLES AVAILABLE ON REQUEST

+ HEATGEAR®

Ideal for workouts in the gym and when the temperature starts to rise outside, our signature HeatGear® line delivers a highly breathable construction that wicks sweat to the surface to keep you cooler, drier, & lighter than ever. Smooth and sleek HeatGear® fabric is durable, comfortable, and won't weigh you down. Its 4-way stretch fabrication improves range of motion, dries faster and maintains shape. Our signature moisture transport system wicks sweat away from the body, keeping you cooler and drier. Anti-odour technology prevents the growth of odour causing microbes to help keep your gear fresher for longer. HeatGear® apparel also provides you with 30+ UPF protection from the sun.



heatgear
COMPRESSION



1257471 HEATGEAR® ARMOUR COMPRESSION LS TEE

SM-2XL // 84% POLYESTER / 16% ELASTANE

- New Heatgear® fabric, with all the benefits of UA Compression, comfortable enough to be worn all day
- Stretch-mesh underarm panels deliver strategic ventilation
- 4-way stretch fabrication allows greater mobility and maintains shape
- Moisture Transport System wicks sweat away from the body
- Anti-odour technology prevents the growth of odour causing microbes

BODY/LOGO

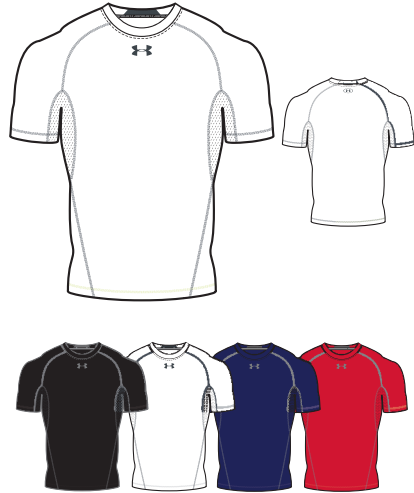
001 BLACK/STEEL

100 WHITE/GRAPHITE

410 MIDNIGHT NAVY/STEEL

600 RED/STEEL

WOMEN'S AND YOUTH STYLES AVAILABLE ON REQUEST



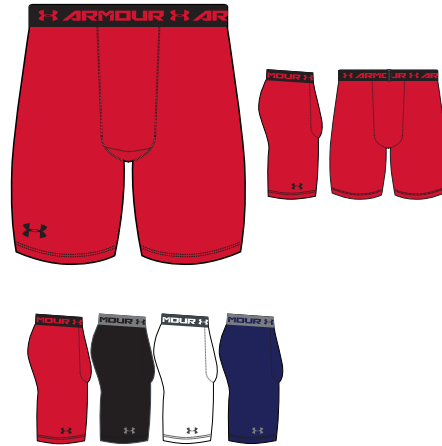
1257468 HEATGEAR® ARMOUR COMPRESSION SHORTSLEEVE T

SM-2XL // 84% POLYESTER / 16% ELASTANE

- HeatGear Armour fabric, with all the benefits of UA Compression
- Stretch mesh underarm panels deliver strategic ventilation
- 4-way stretch fabrication allows greater mobility and maintains shape
- Moisture Transport System wicks sweat away from the body
- Anti-odour technology prevents the growth of odour causing microbes

BODY/LOGO

- 001 BLACK/STEEL
- 100 WHITE/GRAPHITE
- 410 MIDNIGHT NAVY/STEEL
- 600 RED/STEEL



1257470 HEATGEAR® ARMOUR COMPRESSION SHORT

SM-2XL // 84% POLYESTER / 16% ELASTANE

- Heatgear® fabric, with all the benefits of UA compression, comfortable enough to be worn all day
- 4-way stretch fabrication allows greater mobility and maintains shape
- Moisture Transport System wicks sweat away from the body
- Anti-odour technology prevents the growth of odour causing microbes
- Inseam: 6"

BODY/LOGO

- 001 BLACK/STEEL
- 100 WHITE/GRAPHITE
- 410 MIDNIGHT NAVY/STEEL
- 600 RED/BLACK



1271335 HEATGEAR® ARMOUR COMPRESSION SLEEVELESS T

SM-2XL // 85% NYLON / 15% ELASTANE

- HeatGear fabric, with all the benefits of UA compression, comfortable enough to be worn all day
- Stretch-mesh underarm panels deliver strategic ventilation
- 4-way stretch fabrication allows greater mobility and maintains shape
- Moisture Transport System wicks sweat away from the body
- Anti-odour technology prevents the growth of odour causing microbes
- Mesh panel at back neck with ARMOUR woldmark

BODY/LOGO

- 001 BLACK/STEEL
- 100 WHITE/GRAPHITE
- 090 CARBON HEATHER/BLACK
- 600 RED/BLACK

WOMEN'S AND YOUTH STYLES AVAILABLE ON REQUEST

UNDER ARMOUR NUMBERS, LETTERS & LOGO DETAILS

NUMBERS & LETTERS

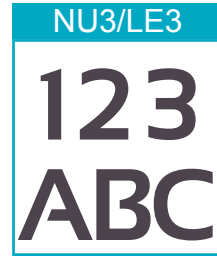
Choose from three styles of number/letter to compliment your on field garments. Whether you're looking for a college style number, a clean, modern typeface, or something more classic, our three styles fit perfectly with our teamwear ranges.



Solid
(1 Colour)



Solid
(1 Colour)



Solid
(1 Colour)



Two Tone
(2 Colour)



Two Tone
(2 Colour)



Two Tone
(2 Colour)

20cm numbers are recommended for the back of both performance and regular fit jerseys, shirts and tops, 5cm numbers for shorts, trackpants, or chest and sleeve positions.

Names can be added across the back shoulders, or as initials on the sleeve/chest. These are available in 5cm and 7cm high lettering. If necessary, we reserve the right to adjust the size/layout of logos, numbers and lettering to fit the garment in the most attractive way possible.

Numbers and names can be sublimated into any of our on-field sublimated garments. There is no additional cost to the garment, and colours can be specified from our 12 core colours, or Pantone (PMS) colours of your choice.

NETBALL PATCHES

Complete your netball kit with a set of UA netball patches. Our patches are fully sublimated to compliment the colour of your dresses or tops. For sublimation, we use the Pantone colour library, allowing us to use almost any colour in your teamwear designs.

PATCH SPECIFICATION

Dimensions: 185mm (w) x 220mm (h)

Colour: Sublimated (all colours available)

Quantity: A full set contains 14 patches (7 positions)

Velcro: 2cm velcro to attach to dresses/tops

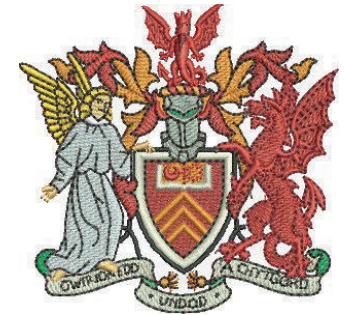


EMBROIDERY

A full embroidery service is available for your crest or logo.

If the logo is already set up, the electronic version (the embroidery disc or DST file) will need to be submitted with the order, as well as details of the colours required. Madeira thread shades must be provided, otherwise standard Under Armour colours will be used.

If the logo is not set up electronically, we will require a high resolution logo in order to set up the disc for you. Please explain how you want your logo to appear on both dark and light backgrounds, as well as giving adequate sizing information. You will receive a copy to approve before production.



HEATSEAL & THERMO PRINT

Screen printing and thermo printing are available on selected items. For best results, we require a high resolution logo to be sent to us electronically.

Suitable formats include:

Ai - Adobe Illustrator file

EPS - Vector format

PDF/JPEG - High resolution (300dpi+)

For logos containing text, please provide us with the font name if possible. Pantone (PMS) colours must also be submitted. If no pantone colours are specified, standard Under Armour colours will be used.

Crests and logos can be sublimated into any of our sublimated garments at no additional cost. We still require high quality logos for sublimation, so please use the above points as a guide.

Some fabrics are better suited to some applications methods than others. If you are unsure about choosing the best logo application method, please contact your Under Armour sales representative for more information.

IMPORTANT NOTE: Please ensure you have all necessary permissions before using any logos or imagery. Under Armour Team-sports can not accept any responsibility for the unauthorised use of third party logos or images. Under Armour Team-sports reserve the right to refuse to apply any name or logo considered offensive or unsuitable.



